

September 2013

Table of Contents

** Planting Together **

1. The Lamplighter—Chaplain Steve Benson
- 2+. News from the Business Manager (Budget Receipts)—Roger Curtis
- 3+. Camp Okoboji (Creation Museum / Military Family Retreat / Women’s Retreat)—Lori Gamble
4. !Amigos en Cristo!—Missionary Dan Vogel
5. LCEF—Carole White
- 6+. Mission Opportunities (Hinge Events / Pastor People Project)—Rev. Mark Gerken
7. IOWAY—Ellie Menz
- 8+. Mission Central (Events at Mission Central)—Gary Thies
9. Hispanic Outreach in Siouxland—Missionary Henry Witte
- 10+. EYES on Youth Ministry (Jr. Youth Gathering Poster)—Rev. Steve Hayden
11. Stewardship in Iowa District West—Rev. Phill Andreasen

ALSO INCLUDED...

Lutheran Education Association—“Celebrating God’s Gift of Aging”
The Lutheran Service Society and Auxiliary Banquet
National Lutherans For Life Conference
Operation Barnabas
Organist Workshop
Pastors Golf Day



Calendar of Events

- September 2—Labor Day, District Office Closed
September 9—Pastors Golf Day, Ida Grove Country Club
September 14—LERT Training, Shepherd of the Valley, West Des Moines
September 16—LERT Training, Trinity, Boone
September 16-18—Coaching Clinic, Good Shepherd, Fort Dodge
September 17—Administrative Assistants Conference, St. Paul, Fort Dodge
September 23-24—Pastors Conference, Gloria Dei, Urbandale
September 28—Operation Barnabas Conference, Carroll County Conservation Center
September 29—The Lutheran Service Society & Auxiliary Banquet, Redeemer, Sioux City

CALL RECEIVED

The Rev. Ronald Burcham, Urbandale, to Chandler, AZ.

TRANSFERRED OUT

The Rev. Russell Anderson, EM, Ocheyedan, to Florida-Georgia District, 7-1-13.

CHANGE OF STATUS

The Rev. David Ericksen, Hartley, to Emeritus, 8-25-13.

COMMISSIONED MINISTERS—CALLS ACCEPTED

Chelsea Adams, Oklahoma City, OK, to Mt. Olive, Des Moines.

Rebekah Janke, graduate of Concordia-Mequon, to Mt. Olive, Des Moines.

Rachel Miller, graduate of Concordia-St. Paul, to Clarinda Lutheran School.

Kaitlyn Tibben, graduate of Concordia-Seward, to Clarinda Lutheran School.



Looking Ahead...

October 4-5—Pre-Retirement Workshop, Ankeny

October 12—Clergy Wives Workshop, Fort Dodge

October 12—Organist Workshop, Carroll

October 12—LERT Training, Ogden

October 12—Hinge Event, Honey Creek

October 13—Hinge Event, Lake View

October 26-27—Jr. High Youth Gathering, West Des Moines

From the IDW Personal Missions Subcommittee

Are you interested in attending the Lutheran Hour Ministries Regional Outreach Conference (ROC) October 18-19 in Omaha? Be on the lookout for a scholarship opportunity coming soon from IDW Personal Missions Subcommittee.

Clergy Wives Workshop

Pastors, please encourage your wife to attend the Clergy Wives Workshop, Saturday, October 12, 9:00 AM to 2:30 PM at the District Office in Fort Dodge. The topic, "Boundaries" will be led by Christine Erickson, Lutheran Family Service counselor and pastor's wife. More details will be shared in the weeks ahead.

Follow Iowa District West on these social communication websites.



[www.facebook.com/
IowaDistrictWest](http://www.facebook.com/IowaDistrictWest)



[www.twitter.com/
IowaWest](http://www.twitter.com/IowaWest)



[www.youtube.com/user/
IowaDistrictWest](http://www.youtube.com/user/IowaDistrictWest)

Iowa District West, LCMS
409 Kenyon Road, Suite B
Fort Dodge, IA 50501

515.576.7666 Phone
515.576.2323 Fax
sue.light@idwlcms.org

www.idwlcms.org

Please note: The inclusion of items from outside sources in *The Monthly* is for information purposes only. Inclusion of such items does not constitute District endorsement.



Planting Together September 2013

409 Kenyon Road, Suite B — Fort Dodge, Iowa 50501
515-576-7666 Fax 515-576-2323 www.idwlcms.org
Contact email: sue.light@idwlcms.org

The mission of Iowa District West is **Connecting, Resourcing, Optimizing, Partnering** and **Serving** with the member congregations for the extension of the Gospel within our communities, throughout the District, and into all the world.

LCEF—Connecting Families to Christ



It's the time of year when children are back in school, schedules are back to routine, and the budget is back to normal after summer activities sent spending skyrocketing. Perhaps you find yourself getting back to regular Sunday worship also. Being back is good!

While being out of routine can be good; being out of financial balance isn't so good. Lutheran Church Extension Fund (LCEF) has investment opportunities to help families plan for the unexpected and the financial spikes of raising a family. One investment offers the opportunity for you to put money aside for emergencies automatically. The fantastic bonus of the investment is that LCEF uses these funds to help LCMS churches and schools fulfill their mission, one of which is to connect families to Christ. So while you are helping your own family financially you could be helping another family spiritually!

For more information on investment opportunities go to www.lcef.org or call the national office at 1-800-843-5233. I'm also willing to help with additional information. Contact me at carole.white@lcef.org or 1-877-439-5233.

Carole White, LCEF District Vice-President

Operation Barnabas Conference

The Iowa District West Operation Barnabas Conference is Saturday, September 28, 2013 at the Carroll County Conservation Center (Swan Lake State Park), Carroll, Iowa. For more information or to register go to <http://www.idwlcms.org/gotodownloadfile.php?file=206>.

A number of upcoming events are designed to help equip you and your congregation for passionately, intentionally and faithfully reaching out into the mission field of your local community:

- ◆ **Hinge Events**, held in partnership with Transforming Churches Network, are designed to assist congregations and individuals build bridges and relationships with those in their community. Go to www.iowamissions.org to register.
- ◆ **Regional Outreach Conference (ROC)**, Omaha, NE, October 18-19. Led by Lutheran Hour Ministries and designed to provide plentiful resources and inspiring motivation for Christians who live in the freedom of the Gospel to share it with others. Go to www.lhm.org/roc.
- ◆ **National Rural and Small Town Mission Conference**, Kansas City, MO, October 31-November 2. Network with others, be encouraged, and hear about resources designed to assist your congregation in sharing Christ. Go to www.lcms.org/rstm/conference.

Enjoy the Fall Season at Camp Okoboji

Camp Okoboji is available for retreats and/or family get-a-ways. Whether your group/family is large or small, we can accommodate you.

Volunteer Weekend—October 4-6

Project needs include indoor/outdoor, active/less-active and skilled/unskilled help for people of all ages and capabilities. Free housing and meals are provided for those who come to help. The weekend will conclude on Sunday with a Worship Service and Omelet Brunch.

Bus Trip

A four-day, three-night excursion is planned to the world famous Creation Museum in Petersburg, Kentucky from Tuesday, October 22 through Friday, October 25. The cost for this trip is \$400 for single occupancy and \$380 for double occupancy. Check the Camp Website at www.campokoboji.org for more details.

SEPTEMBER

District Dates

September 2...Labor Day, District Office Closed
September 9...Pastors Golf Day, Ida Grove Country Club
September 14...LERT Training, Shepherd of the Valley, West Des Moines
September 16...LERT Training, Trinity, Boone
September 16-18...Coaches Clinic, Good Shepherd, Fort Dodge
September 17...Administrative Assistants Conference, St. Paul, Fort Dodge
September 23-24...District Pastors Conference, Gloria Dei, Urbandale
September 28...Operation Barnabas Conference, Carroll
September 29...Lutheran Service Society & Auxiliary Banquet, Sioux City

For more information on Iowa District West activities, view *The Monthly* at http://www.idwlcms.org/publications/the_monthly/index.htm.

Dear Friends in Christ,

In 1960 the Ad Agency of Dancer-Fitzgerald-Sample developed the slogan for Bounty Paper towel – “The Quicker Picker-upper.” In their commercial a gentleman sitting at the diner counter spills a glass of pop. The waitress assures him that it will be okay as she grabs a sheet of Bounty and cleans up the mess and quips “Bounty, the quicker picker-upper.”

From this slogan more mottos grew. Phrases like the following were given birth: “Bounty: it can handle the tough jobs” and “Bounty: it won’t fall apart on you.”

Aren’t these the qualities we look for in our Savior? Life is filled with many challenges, hardships, and tragedies. Yet we act as if these things are a surprise when we have actually been warned about their existence. Jesus said in Matthew 10:21-22, **“Brother will deliver brother over to death, and the father his child, and children will rise against parents and have them put to death, and you will be hated by all for my name’s sake. But the one who endures to the end will be saved.”** Again the Apostle John in chapter 15 shares, ¹⁸ **“If the world hates you, know that it has hated me before it hated you. ¹⁹ If you were of the world, the world would love you as its own; but because you are not of the world, but I chose you out of the world, therefore the world hates you.”** It is not a friend who hates you but an enemy. In such a world, whose enemy seeks the good of those they hate?

True story. A Christian leader – We’ll call him Brad – was traveling by plane. He noticed that the man sitting two seats over was thumbing through some little cards and moving his lips. The man looked professional with

his goatee and graying brown hair, and Brad placed him at fifty-something. Guessing the man was a fellow believer, Brad leaned over to engage him in conversation. “Looks to me like you’re memorizing something,” he said. “No, actually I was praying,” the man said. Brad introduced himself. “I believe in prayer too,” he said. “Well, I have a specific assignment,” said the man with a goatee. “What’s that?” Brad asked. “I am praying for the downfall of Christian pastors.” “I would certainly fit into that category,” Brad said. “Is my name on the list?” “Not on my list,” the man replied.

As Christians and children of the Heavenly Father, we find ourselves in the midst of a battle. Paul says in Ephesians 6: 10-12, **“Finally, be strong in the Lord and in the strength of his might. Put on the whole armor of God, that you may be able to stand against the schemes of the devil. For we do not wrestle against flesh and blood, but against the rulers, against the authorities, against the cosmic powers over this present darkness, against the spiritual forces of evil in the heavenly places.”**

As frightening a thought this may be, we have victory through our Lord Jesus Christ. We see clearly that God can handle the tough jobs. God does not fall apart on you, but He keeps you always under His watchful eyes. Paul, who was fraught with many difficulties, would write to the people in Philippi, “I can do all things through him who strengthens me.” [4:13] He knew that he did not face danger alone, but that God was with him. Jeremiah 32:17 states God’s power and ability in the following words, **“Ah, Lord GOD! It is you who have made the heavens and the earth by your great power and by your outstretched arm! Nothing is too hard for you.”** The

concluding thought is that God who created all things is greater than that which was created.

A young boy traveling by airplane to visit his grandparents sat beside a man who happened to be a seminary professor. The boy was reading a Sunday school take-home paper when the professor thought he would have some fun with the lad. “Young man,” said the professor, “If you can tell me something God can do, I’ll give you a big shiny apple.” The boy thought for a moment and then replied, “Mister, if you can tell me something God can’t do, I’ll give you a whole barrel of apples!”

Our God can do all things. In Jesus, God has defeated all of our enemies. In Jesus God wins for us victory over our sin and by His grace grants us forgiveness. In Jesus, God triumphs over Satan. Jesus himself says, ***“I have said these things to you, that in me you may have peace. In the world you will have tribulation. But take heart; I have overcome the world.”*** [John 16:33] Or in his epistle John encourages his readers of their own victory by writing, ***“Little children, you are from God and have overcome them, for he who is in you is greater than he who is in the world.”***

For these reasons, God is like Bounty. He is the quicker picker-upper. God can handle the tough jobs. God won’t fall apart on you. You can place your trust in Him.

Peace in Christ,
Chaplain Steven K. Benson

The Good Shepherd Hour can be heard on KSCJ-1360 (Sioux City) at 8 am; KLEM-1419 (Le Mars) at 8 am; KAYL-101.7 (Storm Lake) at 8:30 am; and KVFD-1400 (Fort Dodge) at 8 am.

THE LAMPLIGHTER



**THEME: Lessons from Advertisement Slogans –
“The Quick Picker Upper”**

SEPTEMBER 2013

“I have said these things to you, that in me you may have peace. In the world you will have tribulation. But take heart; I have overcome the world.” [John 16:33]

*Publication of The Lutheran Service Auxiliary
4505 Applewood Ave.
Sioux City, Iowa 51106*

Next meeting is at St. Paul’s Lutheran Church
Sioux City, Iowa on October 2, 2013

EYES on Youth Ministry

Educating Youth, Encouraging Servants

It had already been a rotten day and it was only beginning. Nothing had been going well for her since that fight with her best friend. She felt so alone and empty. She had snapped at her parents, yelled at her brother, ignored her chores, and just plain moped around the house all day. “Maybe I should text her,” she finally thought, but when she picked up her phone the battery was dead. “Great,” she fumed; blaming the phone even though she was the one who had forgotten to plug it into the power.

We’ve all had those rotten days, those days when nothing seems to be going well. Those days when we feel empty, our batteries drained. We have snapped and yelled at loved ones, avoided the never-ending list of things we really needed to do and, well, just moped around. Real problems, real pain, real sin. How many times have we felt empty and drained and ended up blaming the events of life around us instead of realizing that we are the ones who failed to plug into the power to re-charge.

The theme of the 2013 Iowa District West Junior Youth Gathering is “Re-Charge.” The Apostle Paul tells us, “*Be joyful always; pray continually; give thanks in all circumstances, for this is God’s will for you in Christ Jesus*” (1 Thessalonians 5:16-18). By His death and resurrection, through His Word and Sacraments, Jesus provides power to re-charge us in the face of all that tries to drain us of joy and strength. Our speaker will be Craig McCourt. For more than 25 years, Craig has ministered full time to youth and their families using his remarkable teaching style to present biblical truths in ways that brings God’s re-charging power to believers’ lives. He is founder of GodPonders Ministries, creator of www.godponders.org, an online blog site to encourage students and their families to connect God’s power given in faith to everyday life. Over the years Craig has spoken to hundreds of groups both large and small.



Those attending will also have the opportunity to package fortified rice/soy meals that will be delivered to hungry and starving children throughout the world. We will be working with Mercy Meals of Siouxland and our goal is to pack 45,000 meals on Saturday, October 26. Registration materials have been mailed to congregations. The packet is also available online at www.idwlcms.org/youthministry.php or www.idwyg.org. Join us October 26-27 at the Sheraton Hotel in West Des Moines for **Re-Charge**.

Pastor Steven Hayden
Executive Assistant for Youth

Iowa District West Junior Youth Gathering



Sheraton Hotel — West Des Moines, Iowa
October 26-27, 2013



Music By:
Swen and Dean

“Be joyful always; pray continually; give thanks in all circumstances, for this is God’s will for you in Christ Jesus.”

1 Thessalonians 5:16-18

Keynote Speaker:
Craig McCourt





The Discipleship Paradox

Being a “disciple” of Christ can mean living in a paradox. Christ’s command was, “Go, therefore and make disciples of all nations. . .” The definition of a Christian however, has somehow separated being a disciple of Christ from the process of “making disciples.”

In the New Testament, the Greek word for “disciple” is, “*mathetes*” a word simply meaning “learner” or “pupil.” Thus a Christian (a word used only twice in the Bible) is defined as someone who is a “*mathetes*” (used 268 times in the Bible) – literally a learner. We learn from God through His Word. But then the key question: What are we doing about it?

We worship, read the Bible, walk the dog, watch TV, interact with people, discipline our children, spend money. In whatever situation, what are we doing in response to the “learning” that we have received from God’s Word? Here is where we find the paradox.

In truth, a learner of God’s Word is less likely to put learning into action unless he can catch the applications of discipleship from others in addition to being taught from God’s Word. People were impacted by Jesus as they followed Him and saw Him put into practice what He had taught. Think of how that happened when the disciples asked Jesus to teach them how to pray. They didn’t ask merely for the theological implications of prayer, but actually how to do it. He gave them the model prayer. Think of how He also taught them love and service in action by picking up the little children and blessing them and how to serve by actually washing the feet of the disciples.

Paul realized that very truth and therefore he said, “Be imitators of me, as I am of Christ” (1 Cor. 11:1). In other words, to make disciples we need not only teach the Word but show how such teaching is put into the practice of our daily lives. Where people model discipleship, others will practice what they see and the work of making even more disciples will multiply as God grants us His grace.

Discipleship is therefore as much about learning more as it is about discovering and acting out the will of God in our lives. God designed the process to involve people, and that’s why discipleship is ultimately about connecting with someone who will help you connect with God’s Word for the purpose of fulfilling your God-given purposes. It really is about a life of service, learning God’s will from God’s Word and modeling service in His name from others.

That can be a difficult concept to grasp, especially in our Lutheran tradition. We are very gifted and blessed to have wonderful educational growth opportunities in God’s Word. We are less fortunate to have models of that learning in those we join in the pews. People come to worship and they leave following the benediction. Their learning takes place, but their modeling is thwarted by the fact that they spend little time watching the service practices of others take place. It is not enough for pastors to merely assume that learning is sufficient. People must experience models of ministry in order to actually put into practice what they learn.

As in anything else, the academic experience must be put into practical application otherwise the paradox of being a disciple and making disciples continues. The one does not translate into the other.

For a moment, consider those whose lives modeled your concept of being a disciple of Christ. Think about how they put into practice the learning they received from God's Word in serving others by offering their time, talents and treasures. Then think about how you are intended by God to model the same for others. It is in this second stage of our discipleship development that "making disciples" takes place. Jesus said, "*Let your light so shine before men that they may see your good works and glorify your father in heaven.*" People can be baptized and catechized but never made a disciple because no one ever modeled for them how to be one.

This process has for centuries been a rather natural process when people and congregations were less mobile. One generation would follow the previous generation as the young would watch their elders serve and then put into practice the same model for the next generation to follow. Today that doesn't happen as easily since there are no longer the same families, the same dynamics and certainly not the same culture as before. How vital it is therefore to become much more intentional about modeling for the future.

In what ways can you see this being done in your congregation or in your family? In what ways can this be done in our District? I hope that I might be able to help you catch the vision of how "making disciples" might happen in your congregation. Please contact me.

Rev. Phill Andreasen
Executive Assistant for Stewardship
Phill.Andreasen@idwlcms.org
712-336-1010

NEWS FROM THE BUSINESS MANAGER
Iowa District West Congregation's Mission Receipts



For the month Ending July 2013	
Anticipated Amount	\$ 148,000
Actual Receipts	\$ 134,234
Fiscal Year-to-Date Receipts	
Anticipated Amount	\$888,000
Actual Receipts	\$890,294
Over (under) anticipated amount	\$ 2,294
Use of Mission Receipts	
Remitted to Synod (46%)	\$ 409,535
Balance for District programs/operations	\$ 480,759
Total Receipts	\$ 890,294
Mission Receipts Compared With Last Year	
Year-to-date 2013	\$890,294
Year-to-date 2012	\$852,366
Over (under) last year	\$ 37,928

Lutheran Church Extension Fund

The mission of Lutheran Church Extension Fund is to provide opportunity to make funds and services available in support of the Great Commission through The Lutheran Church—Missouri Synod.

As of July 2013, 970 investments in Iowa District West totaled \$32,296,169. Those investments are providing opportunity for 42 loans totaling \$9,799,224 plus commitments totaling \$373,980. LCEF puts invested dollars to work in mission and ministry right here in Iowa District West.

If you are interested in investing in the ministry of LCEF or if you have questions on the loans and services provided to our congregations, please contact Carole White. **Come, Join the Ministry!**

Pastors and Church Secretaries: How about including a brief note about LCEF in your church newsletter or bulletin? Please use the following short paragraph—thank you!

Bring Home the Message of Faithful Stewardship

Encouraging your children in their faith can take many forms: regular prayer and worship, setting a good example of service, talking about Jesus, and practicing proper stewardship.



Young people can learn more about good stewardship through the new Young Investors (Y.I.) Club. This Lutheran Church Extension Fund (LCEF) program is grounded in the owner/manager understanding of stewardship. Children learn that they are blessed with God's many gifts—including time and talents—and can be cheerful givers and receivers of His gifts. Activities, articles and Bible verses can be applied in each child's daily walk with God. Open a Y.I. StewardAccount[®] and start cultivating a strong sense of stewardship today! Visit lcef.org for program details.

Stewardship Spark / Monthly Money Mission Moment

Did you know that your congregational mission dollars support the District budget in a variety of missions, including \$36,000 for Campus Ministry? The District partners with Memorial in Ames supporting Iowa State University and Trinity, Des Moines supporting students at Drake University. Hannah McCulloh, International Student ministry coordinator at Memorial sees many students from around Iowa and the country. At Trinity, currently about 25 students are in worship each week and about 10 are in Bible study. To learn more about the Trinity campus ministry, go to www.trinitydesmoines.com/campus.html. The Memorial campus ministry website is: www.memoriallutheranchurch.org/international.html. Check out the District's latest mission moment video that raises the importance of campus ministry and of sending contact information of our college students to nearby LCMS congregations (check out the video on Facebook or direct link www.idwlcms.org/videos.php?id=4).

Congregational Quarterly Financial Report

Included in *The Monthly* is the report for the second quarter (February 1-July 31, 2013) of the first six months of the District's fiscal period congregational support. Review your church's mission pledge to make sure your budget receipts are up to date. This report includes only District/Synod receipts and no restricted missionary support or other program income. Your mission dollars enable us to "Connect, Resource, Optimize, Partner, and Serve" every District congregation plus support Synod missions.



October is Clergy Appreciation Month

Clergy Appreciation Month is a special time that congregations set aside each year to honor their pastor(s) and his family for their hard work and sacrificial dedication. You might consider a special service of affirmation, a potluck event or planting a tree in their honor. The sky is the limit! It is usually scheduled in October, but can be held at any time that is convenient for the church. To receive additional ideas, you can download details free from Focus on the Family's Clergy Appreciation Month Planning Guide at <http://thrivingpastor.org/clergy-appreciation-guide/>.

Secretarial/Administrative Assistants Fall Conference

The Iowa District West Secretarial/Administrative Assistants Conference will be held on Tuesday, **September 17** from 8 a.m. - 3:30 p.m. at St Paul Lutheran Church, Fort Dodge. There still is time to register (registrations postmarked by September 1 receive the best rate). Extra brochures can be printed from the District website at www.idwlcms.org/district_news/secretarial_conference/brochure.pdf. Any questions, contact Roger Curtis at Roger.Curtis@idwlcms.org or call 515.576.7666.

Revised Compensation & Benefit Recommendations

The District, in Convention last summer, approved two completely new guidelines for ordained pastors and commissioned workers. IDW salaries have traditionally been lower than other districts so the goal is to increase the salaries to other district levels in the Midwest. The new and improved guidelines are online at www.idwlcms.org/stewardship.php. Another great resource to review other positions is the *Compensation Handbook for Church Staff* which is available at the District office.

Church & Clergy Finance/Treasurer's Workshop

Plan now to attend the workshop on Saturday, November 2 at the District Office from 9 am to 3 pm. This workshop will begin at 9 am. Cost will be \$25 per congregation (an incredible bargain) which includes materials (one Congregational Treasurer's Manual per church) and lunch. Any individuals within the church having financial responsibilities should attend. The guest speaker will be Mrs. Karen Sansone, CPA. She is the LCMS Tax and Compliance Director and brings a wealth of knowledge and expertise. As the main author of the Treasurer's Manual, she knows her material well!



Thanks to Carole White and Lutheran Church Extension Fund for providing lunch. Any questions contact Roger Curtis at the District office or email Roger.Curtis@idwlcms.org. The brochure and registration form is available online.

Scott Vaughan (2010 Administrative Assistants Conference speaker and church communications consultant) has completed his 2013 Church Communication Survey. Below are the top methods being used by churches to communicate with audiences:



- **Worship Bulletin or Worship Guide.** 95.2 percent of churches. Desiring to reach a captive audience, churches can't let go of this print promotion. A growing trend is to distribute the promotion part of the bulletin as people leave the auditorium or property. This take-away strategy preserves the integrity of worship - focusing people on the Lord instead of reading material.
- **Website.** 94 percent. This fluctuates each year between 94-96 percent of churches. You don't want to be in the 4-6 percent of churches without a website. If you don't have a website, please contact me and let me coach you on how to get a simple site up and working.
- **E-Mail.** 93 percent. With more than 50 percent of North Americans retrieving e-mail on their smart telephone, e-mail is moving into a new chapter of communication.
- **Facebook.** 88 percent. The number of churches using Facebook grows every year. If your church is using Facebook, your pastor should be using it, too. What form of social media is No. 2? It's You Tube or Vimeo at 35.7 percent. What is your church doing with video? Begin talking about it.
- **Brochures.** 75 percent. Churches continue to cut back on the printed newsletter, but still have a desire to print. The number of churches using brochures grew by 10 percent from 2012. This is a waste of money if you aren't considering audience, message, delivery and audience response before you design and print.
- **Newsletters.** 71 percent. This number remains in the 70th percentile, but continues to drop a few percentage points each year. Make sure your decisions are based on audience and not on budget. I would not surrender the printed and mailed newsletter without a fight.

(reprinted with permission from Scott Vaughan Communications, LLC www.svministry.com; Scott can be reached at scott@svministry.com.)

Communications Seminar

Mark your calendar for Scott Vaughan's three hour Church Communications Clinic sponsored by the Central Iowa Chapter of NACBA (National Association of Church Business Administration). It will be held at Lutheran Church of the Cross, Altoona on September 19 from 9 am to noon.

The topic is "Practical 21st Century Communication - Staff, Church, Community." Participants in this clinic will get a big-picture overview of church communication as it faces today's local church. Themes include understanding audiences; assessing methods like websites, social media, print, e-mail, video, text-messaging, signs, worship announcements; greeter and usher ministry; church reputation; best messages to today's audiences; and the value of timing message delivery. Beyond the clinic, Scott will resource all participants with follow-up documents for future use within their churches.

Cost is \$35 per person. To register, send payment to Lutheran Church of the Cross, 1701 8th St SW, Altoona, 50009 by Monday, September 16. If you have questions, contact Laurel Swanson at Laurel@lccaltoona.org or call 515.967.4818.

Is a written bulletin necessary?



As more and more congregations are purchasing inexpensive, yet quality projectors, Christian Computing Magazine asks the question, "As congregations are doing more announcements on PowerPoint, is a written bulletin in this technology age still necessary?" In summary, the answer is yes. We need to communicate through every available channel so that no matter where people are with technology, they can understand and respond to the message. A written bulletin puts the worship activities in perspective from the minute a visitor sits down, early or late. The website is a fantastic tool to refer to in the bulletin. Though we need every tech-savvy tool to illustrate our message and for the impact and repetitions they provide, written bulletins are still a useful tool for ministry communications. Find out more about church communications at the seminar mentioned above.

Concordia Plan Services (CPS) - Updates 2013-2014

Please remember that the fall schedule is a few weeks earlier this year due to requirement by the health care reform law. All congregations have now received the Concordia Health Plan (CHP) Choice materials. The “official” health plan rate notices are accompanied with the CHP Choice Election materials (the rates are increasing 11.5-13.5% for all plans). To review rates for your area, check out the rate calculator at www.concordiaplans.org/detailpage.aspx?Id=55.

Regarding the **Concordia Retirement Plan** (CRP), contribution rates will adjust mid-year, effective July 1, 2014. The rate increase for all packages will be 8.7% (for vested workers on the regular basis).

The **Concordia Disability and Survivor Plan** (CDSP) rates will not change: with dependents 2.25%; without dependents 1.2%. The rates are a percentage of the worker’s reported annual compensation.

New Administrative guides (mailed to all organizations in early August and available online at www.concordiaplans.org/DetailPage.aspx?ID=293 - 2014 Employer Guide to the Concordia Health Plan – *What to consider before choosing your Option(s)*, 2014 Employer Guide to Personal Spending Accounts, 2013 Administrative Information for Treasurers and Business Managers, 2013 CRSP Employer Administrative Guide, 2013 HRA Reference Guide, and 2013 HSA Reference Guide.

As rates continue to increase and congregations shift to Options with higher deductibles, tax exempt options are added. Employers interested in offering Personal Spending Accounts {Flexible Spending Account (FSA), Health Savings Accounts (HSA), and Health Reimbursement Arrangement (HRA)} will no longer have to search for an account administrator. SelectAccount/Blue Cross Blue Shield has many benefits: no account set-up fees, lower administrative fees, and “cross-over” features allowing automatic flow of claim information from the healthcare system to the personal spending account.

If employers choose to change their health plan option, the deadline to submit the 2014 Option Election Form (including the SelectAccount personal spending option) is **September 16, 2013**. Health plan options are available online at www.concordiaplans.org/DetailPage.aspx?ID=22. To view the various options, click on the four PPO Options and/or two CDHP Options).

CPS is staying on top of the health care reform. To learn more, take a look at our latest flyer from our Health Care Reform educational series that discusses Premium Tax Credits (or Subsidies) for individuals who purchase coverage on a Marketplace with post-tax dollars. Complete details at www.concordiaplans.org/track.aspx?link=graphics/assets/documents/Premium_Tax_Credit_Flyer.pdf. You can find the series of Health Care Reform flyers on the CPS website by going to Healthcare/Health Care Reform News and Information/Publications and Resources/Education Series.

As you plan your 2014 health care offering and have any questions, contact Business Manager Roger Curtis, Benefit Consultant Brad Peterson (888-927-7526, ext. 6727 or Brad.Peterson@concordiaplans.org) or Employer Relations Specialists Jason Williams (888-927-7526, ext. 6806 or Jason.Williams@ConcordiaPlans.org).

Concordia Plan Services Pre-Retirement Workshop

Church workers are encouraged to learn more about their retirement and attend the October 4-5, 2013 retirement workshop in Ankeny sponsored by the District and Concordia Plan Services. This retreat-style workshop will begin on Friday evening (7 pm) as you start to explore your expectations in retirement. It will continue through Saturday afternoon (3 pm). Finances, benefits, and many other topics will be explored. There is no cost for this workshop (see poster for more details).

Iowa District West Unrestricted Budget Receipts

February 1, 2013 – July 31, 2013

Circuit	Congregation	Town	Communicants	Pledge	Actual Amount	Per Comm.	
ADAIR	IMMANUEL	ADAIR	182	1,200.00	600.00	3.30	
	ST. JOHN	ADAIR	74	500.00	0.00	0.00	
	HOLY CROSS	ANITA	134	0.00	0.00	0.00	
	ZION	ATLANTIC	563	20,400.00	8,500.00	15.10	
	ST JOHN	CASEY	144	1,000.00	0.00	0.00	
	ZION	DEXTER	186	200.00	200.00	1.08	
	IMMANUEL	GREENFIELD	183	4,800.00	2,400.00	13.11	
	IMMANUEL	GUTHRIE CENTER	193	5,000.00	1,200.00	6.22	
	ST. THOMAS	PANORA	111	1,200.00	600.00	5.41	
	FAITH	WINTERSSET	28	600.00	450.00	16.07	
	FIRST	WIOTA	239	2,680.00	1,682.92	7.04	
	Total				37,580.00	15,632.92	
	ALGONA	TRINITY	ALGONA	907	56,000.00	26,960.00	29.72
ZION		AYRSHIRE	37	6,000.00	2,000.00	54.05	
ST JOHN		BURT	259	4,500.00	3,034.94	11.72	
ST LUKE		CYLINDER	94	5,000.00	2,668.00	28.38	
ST PAUL		EMMETSBURG	274	16,000.00	7,999.98	29.20	
ST JOHN		FENTON	221	4,200.00	2,450.00	11.09	
ST JOHN		GARNER	184	7,800.00	4,550.00	24.73	
ST PAUL		GARNER	592	14,032.00	17,096.72	28.88	
IMMANUEL		LONE ROCK	121	10,000.00	5,539.00	45.78	
TRINITY		MALLARD	173	30,000.00	15,000.00	86.71	
OUR SAVIOR		SWEA CITY	39	0.00	500.00	12.82	
PEACE		WEST BEND	180	16,500.00	10,661.13	59.23	
ST PAUL		WHITTEMORE	155	7,020.00	3,510.00	22.65	
Total				177,052.00	101,969.77		
BOONE	MEMORIAL	AMES	594	43,000.00	21,498.00	36.19	
	ST PAUL	AMES	408	24,000.00	14,333.34	35.13	
	ST. PAUL	BOONE	199	9,000.00	5,011.23	25.18	
	TRINITY	BOONE	614	8,080.00	4,650.00	7.57	
	CHRIST	BOULTON	200	14,000.00	8,166.69	40.83	
	TRINITY	DAYTON	33	2,000.00	500.00	15.15	
	TRINITY	JEFFERSON	436	24,000.00	14,000.00	32.11	
	ZION	OGDEN	350	16,000.00	7,132.00	20.38	
	TRINITY	PERRY	122	4,000.00	2,500.00	20.49	
	Total			144,080.00	77,791.26		
	CARROLL	ZION	ARCADIA	395	13,000.00	7,583.35	19.20
ST. JOHN		AUDUBON	158	740.00	740.00	4.68	
ST PAUL		CARROLL	457	23,100.00	10,776.72	23.58	
TRINITY		COON RAPIDS	110	500.00	500.00	4.55	
PEACE		GLIDDEN	255	5,700.00	4,236.38	16.61	
IMMANUEL		LIDDERDALE	104	3,500.00	2,634.00	25.33	
ZION		MANNING	559	31,500.00	15,750.00	28.18	
Total				78,040.00	42,220.45		
CHEROKEE	ST. PAUL	AURELIA	310	34,000.00	20,157.00	65.02	
	TRINITY	CHEROKEE	417	15,655.00	9,335.00	22.39	
	PEACE	MARCUS	229	12,500.00	6,255.27	27.32	
	TRINITY	MARCUS	146	7,500.00	3,750.00	25.68	
	ST JOHN	PAULLINA	295	1,000.00	0.00	0.00	
	ZION	PAULLINA	554	12,000.00	7,039.25	12.71	
	PILGRIM	QUIMBY	97	2,000.00	1,500.00	15.46	
	BETHEL	SUTHERLAND	237	8,500.00	6,186.00	26.10	
	Total			93,155.00	54,222.52		
COUNCIL BLUFFS	FAITH	COUNCIL BLUFFS	445	5,060.00	2,479.43	5.57	
	ST. PAUL	COUNCIL BLUFFS	534	16,966.00	8,483.02	15.89	
	TIMOTHY	COUNCIL BLUFFS	371	23,729.00	11,090.72	29.89	
	TRINITY	GLENWOOD	322	4,000.00	2,267.98	7.04	
	PEACE	HARLAN	27	1,000.00	500.02	18.52	
	ST. JOHN	HONEY CREEK	258	12,500.00	6,250.00	24.22	
	IMMANUEL	LOGAN	201	1,500.00	700.00	3.48	
	FIRST	MISSOURI VALLEY	299	15,000.00	8,750.00	29.26	
	ST. PAUL	OAKLAND	82	1,000.00	500.00	6.10	
	TRINITY	PERSIA	78	3,000.00	1,250.00	16.03	
	OUR SAVIOR	WALNUT	78	2,000.00	0.00	0.00	
	Total			85,755.00	42,271.17		

DENISON	FAITH	DELOIT	64	1,000.00	0.00	0.00	
	IGLESIA	DENISON	26	1,500.00	500.00	19.23	
	OUR SAVIOR	DENISON	681	19,000.00	11,081.00	16.27	
	ZION	DENISON	1787	20,000.00	6,550.50	3.67	
	BETHLEHEM	DOW CITY	226	5,159.00	2,274.00	10.06	
	ST JOHN	KIRON	99	5,000.00	2,500.00	25.25	
	TRINITY	MANILLA	255	4,000.00	2,436.00	9.55	
	IMMANUEL	SCHLESWIG	532	17,625.00	10,281.25	19.33	
	Total			73,284.00	35,622.75		
	DES MOINES EAST	CHRIST THE KING	ALTOONA	116	4,250.00	2,379.85	20.52
ST PAUL		ANKENY	731	21,000.00	12,250.00	16.76	
HOLY CROSS		CARLISLE	119	6,000.00	3,000.00	25.21	
CALVARY		DES MOINES	70	4,800.00	2,400.00	34.29	
HOPE		DES MOINES	579	10,800.00	8,800.02	15.20	
OUR SAVIOUR		DES MOINES	169	6,500.00	3,791.70	22.44	
PEACE		DES MOINES	313	6,000.00	3,080.00	9.84	
MT CALVARY		INDIANOLA	392	12,500.00	6,250.00	15.94	
Total				71,850.00	41,951.57		
DES MOINES WEST		FAITH	ADEL	502	30,000.00	16,500.00	32.87
	LIVING FAITH	CLIVE	234	1,500.00	0.00	0.00	
	ASIAN	DES MOINES	49	300.00	0.00	0.00	
	MT OLIVE	DES MOINES	389	11,200.00	5,600.01	14.40	
	SUDANESE	DES MOINES	35	300.00	9.50	0.27	
	TRINITY	DES MOINES	324	13,248.00	6,624.00	20.44	
	MESSIAH	JOHNSTON	57	1,200.00	600.00	10.53	
	CHRIST OUR SAVIOR	NORWALK	95	4,030.00	0.00	0.00	
	BEAUTIFUL SAVIOR	POLK CITY	277	6,000.00	3,084.50	11.14	
	GLORIA DEI	URBANDALE	2076	72,000.00	36,000.00	17.34	
	TRINITY	VAN METER	182	7,500.00	840.00	4.62	
	SHEPHERD OF THE VALLEY	WDM	502	0.00	10,212.00	20.34	
	Total			147,278.00	79,470.01		
	FORT DODGE	MT CALVARY	EAGLE GROVE	65	300.00	150.00	2.31
		GOOD SHEPHERD	FORT DODGE	566	20,000.00	9,999.60	17.67
PRINCE OF PEACE		FORT DODGE	222	7,500.00	3,961.70	17.85	
ST PAUL		FORT DODGE	1224	30,000.00	3,895.00	3.18	
IMMANUEL		ROWAN	25	0.00	0.00	0.00	
ST JOHN		VINCENT	131	2,000.00	0.00	0.00	
ST PAUL		WEBSTER CITY	318	12,000.00	6,000.00	18.87	
ST PETER		WOOLSTOCK	34	400.00	0.00	0.00	
Total				72,200.00	24,006.30		
HUMBOLDT		HOLY TRINITY	FARNHAMVILLE	261	12,000.00	12,000.00	45.98
	FIRST	FONDA	27	400.00	100.00	3.70	
	TRINITY	FORT DODGE	108	6,375.00	3,149.25	29.16	
	ZION	HUMBOLDT	775	25,000.00	12,499.98	16.13	
	TRINITY	KNIERIM	124	3,000.00	1,500.00	12.10	
	IMMANUEL	LIVERMORE	80	5,000.00	2,635.00	32.94	
	ZION	LUVERNE	103	5,000.00	2,000.00	19.42	
	IMMANUEL	POMEROY	117	6,000.00	3,000.00	25.64	
	IMMANUEL	ROCKWELL CITY	174	6,500.00	3,250.02	18.68	
	Total			69,275.00	40,134.25		
LE MARS	TRINITY	HAWARDEN	457	13,320.00	9,221.24	20.18	
	TRINITY	HINTON	307	9,000.00	0.00	0.00	
	ST JOHN	IRETON	33	8,000.00	4,000.00	121.21	
	ST PAUL	IRETON	239	9,000.00	4,500.00	18.83	
	FIRST	KINGSLEY	368	7,500.00	4,994.10	13.57	
	GRACE	LEMARS	543	15,000.00	7,980.00	14.70	
	FAITH	ORANGE CITY	285	17,600.00	8,800.02	30.88	
	CHRIST	REMSEN	158	4,500.00	1,158.00	7.33	
	Total			83,920.00	40,653.36		
MAPLETON	TRINITY	ANTHON	123	1,500.00	682.55	5.55	
	ST JOHN	BATTLE CREEK	223	7,200.00	3,504.00	15.71	
	ST PAUL	BATTLE CREEK	75	5,000.00	1,704.75	22.73	
	IMMANUEL	CHARTER OAK	80	4,830.00	3,157.00	39.46	
	ST JOHN	CHARTER OAK	419	10,400.00	3,303.00	7.88	
	ST PAUL	CHARTER OAK	84	6,000.00	3,826.00	45.55	
	GRACE	CORRECTIONVILLE	54	0.00	0.00	0.00	
	ST PAUL	IDA GROVE	854	12,000.00	6,865.00	8.04	
	ST MATTHEW	MAPLETON	444	7,000.00	3,753.34	8.45	
	ST LUKE	RICKETTS	100	3,400.00	726.00	7.26	
	ST PAUL	UTE	253	10,000.00	7,351.21	29.06	
Total			67,330.00	34,872.85			

Circuit	Congregation	Town	Communicants	Pledge	Actual Amount	Per Comm.
NORTHWEST	ST PAUL	HARTLEY	370	29,500.00	17,220.00	46.54
	ENGLISH	LARCHWOOD	60	5,100.00	2,550.00	42.50
	ST JOHN	MAY CITY	130	3,000.00	250.00	1.92
	ST PETER	OCHEYEDAN	164	8,500.00	4,958.34	30.23
	ZION	OCHEYEDAN	84	6,000.00	3,275.00	38.99
	PEACE	ROCK RAPIDS	258	10,000.00	2,916.69	11.31
	ST JOHN	SANBORN	224	9,500.00	5,100.00	22.77
	OUR SAVIOR	SHELDON	48	780.00	318.00	6.63
	Total			72,380.00	36,588.03	
	SAC CITY	ZION	AUBURN	67	3,000.00	1,968.00
FAITH		EARLY	93	4,000.00	2,084.00	22.41
PILGRIM		LAKE CITY	246	5,400.00	2,700.00	10.98
EMMANUEL		LAKE VIEW	345	14,000.00	5,835.00	16.91
TRINITY		ODEBOLT	277	14,500.00	5,390.60	19.46
ST PAUL		SAC CITY	535	15,500.00	6,458.30	12.07
ST PETER		SAC CITY	40	2,250.00	1,750.00	43.75
ST PAUL		SCHALLER	181	11,040.00	4,600.00	25.41
PEACE		WALL LAKE	426	14,000.00	8,166.70	19.17
Total				83,690.00	38,952.60	
SIOUX CITY	ST JOHN	CLIMBING HILL	80	2,000.00	686.20	8.58
	BETHEL	LAWTON	272	4,000.00	336.80	1.24
	SHEPHERD OF PEACE	SGT BLUFF	406	3,000.00	0.00	0.00
	BETHANY	SIOUX CITY	58	1,200.00	600.00	10.34
	CALVARY	SIOUX CITY	614	23,000.00	12,175.63	19.83
	CONCORDIA	SIOUX CITY	90	600.00	150.00	1.67
	FAITH	SIOUX CITY	310	3,000.00	500.00	1.61
	REDEEMER	SIOUX CITY	1092	60,300.00	30,150.00	27.61
	ST PAUL	SIOUX CITY	743	42,000.00	13,620.00	18.33
	Total			139,100.00	58,218.63	
SOUTHWEST	ST TIMOTHY	BEDFORD	18	0.00	0.00	0.00
	IMMANUEL	CLARINDA	216	5,000.00	2,399.00	11.11
	ST JOHN	CLARINDA	610	10,000.00	5,951.98	9.76
	ST PAUL	CLARINDA	217	3,000.00	1,500.00	6.91
	REDEEMER	CORNING	172	3,000.00	1,500.00	8.72
	ST JOHN	HASTINGS	110	4,000.00	1,084.72	9.86
	OUR SAVIOR	LEON	56	360.00	300.00	5.36
	FIRST	MT AYR	38	600.00	300.00	7.89
	IMMANUEL	OSCEOLA	115	2,400.00	781.98	6.80
	TRINITY	SHENANDOAH	152	6,000.00	2,502.50	16.46
	MT CALVARY	VILLISCA	92	2,400.00	1,200.00	13.04
	Total			42,760.00	21,120.18	
	SPENCER	IMMANUEL	ESTHERVILLE	279	10,500.00	5,625.00
CONCORDIA		LAKE PARK	169	2,040.00	1,510.00	8.93
CHRIST THE KING		SPENCER	174	1,000.00	499.98	2.87
FIRST ENGLISH		SPENCER	715	45,000.00	24,927.68	34.86
IMMANUEL		SPIRIT LAKE	684	34,000.00	17,004.00	24.86
IMMANUEL		TERRIL	164	6,000.00	4,281.14	26.10
Total				98,540.00	53,847.80	
STORM LAKE	ST JOHN	ALTA	253	22,950.00	12,122.14	47.91
	ST PAUL	ALTA	274	4,800.00	3,475.20	12.68
	ST JOHN	GALVA	367	18,000.00	12,064.76	32.87
	ST PETER	NEWELL	132	5,000.00	2,486.00	18.83
	FAITH	SIOUX RAPIDS	25	240.00	180.00	7.20
	GRACE	STORM LAKE	358	25,000.00	12,499.98	34.92
	IGLESIA	STORM LAKE	16	1,000.00	500.00	31.25
	ST JOHN	STORM LAKE	383	6,000.00	3,252.20	8.49
	ZION	STORM LAKE	294	7,000.00	3,667.09	12.47
	Total			89,990.00	50,247.37	
Grand Total			1,727,259.00	890,293.79		



What is Happening At Your Camp?

Camp Okoboji

1531 Edgewood Drive

Milford, IA 51351

Phone: 712-337-3325 Fax: 712-337-3318

Email: camp@campokoboji.org Web site: www.campokoboji.org

Our Promise of Jesus at the Lake – A friendly, safe, refreshing and relaxing Christian experience.

Calendar of Events

September 6-7	Dordt All-College Retreat
September 13	Sioux Falls Lutheran School Outdoor Education
September 18-20	IDW Lutheran Schools Outdoor Education
September 20-22	Military Family Retreat
October 4-6	Fall Volunteer Weekend
October 11-13	Kathy Troccoli Concert and Women's Retreat



Fall Military Retreat

The 3rd Annual Fall Military Retreat is scheduled for September 20-22, 2013. This retreat is for all families of the military who have had a family member deployed during the recent Iraqi and Afghanistan deployments. Registration forms are available by contacting Camp Okoboji and the Camp website.

Volunteer Weekend Oct. 4-6

Help is needed to wrap up Camp for the season. Project needs include indoor/outdoor, active/less-active and skilled/unskilled help for people of all ages and capabilities. There will be plenty of time to enjoy Camp and each other as well. Free housing and meals are provided for those who come to help. The weekend will conclude on Sunday with a Worship Service and Omelet Brunch.

Enjoy the Fall Season

Camp Okoboji is available for retreats and/or family get-a-ways. Whether your group/family is large or small, we can accommodate you. Call the Camp office 712-337-3325 or check out www.campokoboji.org.

Thrivent Choice Dollars: \$25 Bonus Funds Available!

We recently received a letter from Thrivent indicating the opportunity to designate Choice Dollars. Thrivent no longer automatically designates Choice Dollars. So let's get those funds designated; whether to Camp

Okoboji or to another agency. Thrivent is offering \$25 in additional funding if your designation is made **online** by Oct. 1, 2013. This is a great opportunity to grow your gift. Go to www.Thrivent.com or call 800-847-4836. Thank you!

Camp Okoboji on the Road!

Paul Golke, Camp Okoboji's new Ministry Advancement Director, plans to be out in the District this fall. He is available to make presentations, lead special events, and/or just talk to you. His energy and enthusiasm for Camp and His Savior are evident and he always brings part of a Camp experience with him. This is a great resource for your church, organization, and/or school. Email him at paul@campokoboji.org or call 616-894-7128.

Ongoing Support of Camp Okoboji

Keeping registration fees low; supporting families in need; replacing broken and outdated equipment; purchasing needed supplies; making improvements to enhance the overall camp experience; and keeping this amazing ministry moving forward. The financial aspects of Camp Okoboji can, at times, appear daunting. But with the ongoing support from congregations, organizations and individuals; together, we can face these opportunities and challenges. Thank you for your consideration and support of Camp Okoboji.

Camp is Debt Free and Trying to Move Forward

As of April 2013, Camp Okoboji is blessed to be free of operational debt. We give God praise and thanks for gifts provided through His servants who have a desire to see His ministry continue here. The Camp Board of Directors and Staff are now preparing for a capital campaign, designed to coincide with Camp's 75th Anniversary, which will further enhance and promote the ministry of Camp Okoboji.

UPCOMING BUS TRIP!

A four-day, three-night excursion is planned to the world famous **Creation Museum in Petersburg, Kentucky** from Tuesday, October 22 through Friday, October 25! **THE COST FOR THIS TRIP IS \$400 FOR SINGLE OCCUPANCY AND \$380 FOR DOUBLE OCCUPANCY.** Check the Camp Website at www.campokoboji.org for more details or call Lori at the Camp Office at 712-337-3325. **REGISTRATION IS NOW OPEN FOR THIS EVENT!**

OPERATION BARNABAS/CAMP OKOBOJI PARTNER AGAIN IN

2013! Because of funds from the IDW LWML and an IDW *Ablaze* grant, Camp Okoboji is again able to offer to military families two nights and three days in any of our Family Ministry Cabins at no cost. The only requirement being that the military troops must have a current military ID serving in the National Guard, Reserves or regular service.

KATHY TROCCOLI CONCERT AND COFFEE/WOMEN'S RETREAT!

October 11-12, 2013. New Registration forms are now available and included in this month's edition of the IDW Monthly, by going to the Camp Okoboji website or calling the Camp office. If you registered in the spring and had your spot held, you are automatically registered! If you were given a refund, you will need to register again. There is plenty of space for this event.

Camp Staff Contact Information!

Executive Director: Doug Kading – doug@campokoboji.org

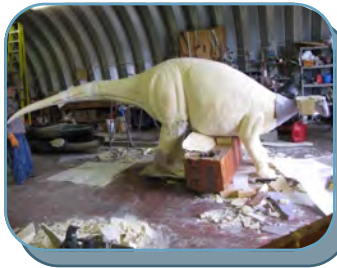
Office Director: Lorene Unrau – lorene@campokoboji.org

Program Director: Lori Gamble – lori@campokoboji.org

Ministry Advancement Director: Paul Golke – paul@campokoboji.org

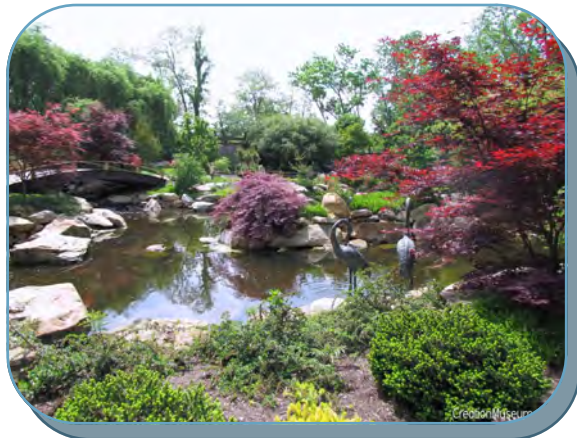
Financial Director: Kellie Jones – kellie@campokoboji.org

The Answers in Genesis Creation Museum is a one-of-a-kind, high-tech museum, filled with animatronic displays (e.g., moving dinosaurs), striking videos, a state-of-the-art planetarium, Special Effects Theater, etc., that is spread out over 60,000 square feet, incorporating up to 40-



foot ceilings to contain some of its massive exhibits. The museum will go beyond

telling the compelling story of the creation of life on this planet to proclaiming the Bible as supreme authority in all matters it addresses.



CAMP OKOBOJI

1531 Edgewood Drive
Milford, IA 51351

Phone: 715-337-3325

Fax: 712-337-3318

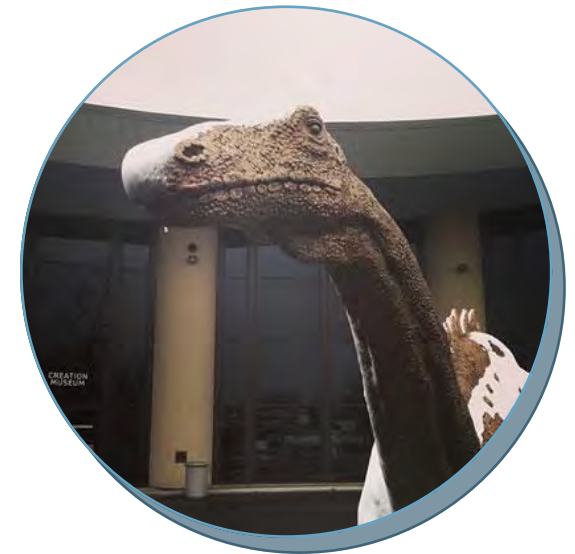
E-mail: lori@campokoboji.org

Website: www.campokoboji.org

CAMP OKOBOJI

Come join the Adventure!

**Creation Museum
Bus Trip
October 22-25, 2013**



**CREATION
MUSEUM**
Prepare to believe.

Registration Deadline

October 1, 2013

All kinds of exhibits!

While at the Creation Museum you will experience many different exhibits. Below are several pictures of what you can expect to see!



Paul Writing

Walk Through History



This walk through history is the centerpiece of the Creation Museum and features amazing scientific and Biblical answers for the world we live in today. Witness the true time line of the universe unfold through the 7 C's of History—illuminating God's redemptive plan throughout history.

Dinosaur Den



WHAT TO BRING

- ✚ Bible
- ✚ Casual clothing
- ✚ Good walking shoes
- ✚ Personal items
- ✚ Snacks
- ✚ Water bottle
- ✚ Umbrella
- ✚ Jacket for cool days/nights
- ✚ Camera
- ✚ Completed Health Form & copies of both sides of your insurance cards (Contact Camp for a Health Form)

Additional Information

Departure from Camp Okoboji at 7am October 22, 2013. The first stop will be the Best Western on Eastgate Drive in Danville, IL.

On October 23 the bus proceeds to the hotel in Lawrenceburg IN to the Comfort Inn and Suites on Flossie Drive to check in and then on to Petersburg, KY. We will spend Wednesday afternoon/evening and all day Thursday at the Museum.

On October 25 the bus will leave at 7am and return to Camp late in the evening. There will lodging available for Monday and Friday evening if desired at an additional cost of \$15 per night. Please contact Lorene at the Camp office to reserve lodging.

Biblical history is the key to understanding dinosaurs. Explore many of these amazing creatures along with fossilized dinosaur eggs, a triceratops skeleton casting, and much more!

Registration Form

Family Name _____

Address: _____

City/State/Zip _____

Home Phone (____) ____ - ____

Cell Phone (____) ____ - ____

Email _____@_____

Participant 1 _____ M or F

Participant 2 _____ M or F

Single occupancy \$400

Double occupancy \$380 each

Monday Lodging At Camp \$15

Friday Lodging At Camp \$15

Fee includes: bus cost, hotel cost, and ticket to Creation Museum. All meals are on your own.

Make checks payable to Camp Okoboji

If paying by Credit/Debit Card please include the following information

Card Number _____

Exp Date _____ Sec Number _____ Total Amount \$ _____

Billing Address _____

City/State/Zip _____

Signature _____

Camp Okoboji
1531 Edgewood Dr
Milford, IA 51351
Phone: 715-337-3325
Fax: 712-337-3318
E-mail: lori@campokoboji.org
Website: www.campokoboji.org

Retreat Schedule

Friday Night

6-9 PM Registration, settle in – No programming

Saturday

8:00 Breakfast
8:30 Orientation/ Get to know you
9:00 Family Session
10:00 Family Free Time/meet with the Chaplain
Noon Lunch
12:45 Spouse Time/ Deployed member take children
1:30 Kids' Time
3:00 Family Time Free Time
5:30 Dinner
6:15 Family Session
7:30 Movie

Sunday

8:00 Breakfast
9:00 Worship
9:45 Family Time
Noon Lunch
1:00 Retreat Concludes in The Refuge
2:00 Head for home!



2013 Military
Family Retreat
September 20-22, 2013

Quality Family Time
Family Sessions
Family Wellness

Camp Okoboji
1531 Edgewood Drive
Milford, IA 51351
Web site: www.campokoboji.org

Phone number: 712-337-3325

What you Need to Know!

This retreat is for all military families who have recently had a family member return from deployment. It is designed for couples and their children with sessions lead by Military Chaplains, children's activities, and free time. We encourage families to provide their own towels and linens, however Camp Okobojoji can provide them if you so choose. Please indicate on the form below your intentions. All beds have pillows and quilts.

Be sure to bring weather appropriate clothing, fishing supplies, camp has canoes, sand volleyball, basketball, and other recreational equipment.

Staff

Camp Okobojoji contact: Lori Gamble- 712-337-3325 (office), 712-320-3364 (cell)

Retreat Leader: Matt Warnke (USN Retired Chaplain)

Presenter: Andy Carlson (Former Navy Chaplain)

Costs—\$100 deposit per family refundable if attend.

Families will be responsible for travel expenses to Camp Okobojoji and Friday night Dinner.

Registration information

Please fill out the following information and return to Camp Okobojoji by September 13, 2013

Family Name _____

Head of Household _____ M or F
Birthdate: ____/____/____ Home
phone (____) ____-____

email address: _____

Cell phone (____) ____-____

Spouse _____ M or F
Birthdate: ____/____/____

email address: _____ Cell
phone (____) ____-____

Children

1. _____ M or F
Birthdate: ____/____/____ Grade ____

2. _____ M or F
Birthdate: ____/____/____ Grade ____

3. _____ M or F
Birthdate: ____/____/____ Grade ____

4. _____ M or F
Birthdate: ____/____/____ Grade ____

Home Address _____

City/State/ Zip _____

Emergency Contact (Name/relationship/phone number)

We will bring my own towels and linens

We would like Camp to provide towels & linens.

If paying by Credit/Debit Card Please fill in the following information:

Card Number _____

Expiration Date ____/____ Security Code _____ Total Amount _____

Name _____

Billing Address _____

City/State/Zip Code _____

Signature _____

Families needing financial assistance

please contact Lori Gamble at:

712-337-3325 or by email:

lori@campokobojoji.org

Registration Deadline :
September 13, 2013

Camp Okobojoji
1531 Edgewood Drive
Milford, IA 51351
Wwww.campokobojoji.org

Special Events for 2013

This Women's Retreat is the rescheduled event that was to happen last May. Christian Music Artist Kathy Troccoli will be our special guest! There are different ways you can participate in the retreat. PREVIOUS REGISTRATION HELD WILL BE HONORED!

The event will begin with a come-and-go dinner, Friday evening concert and fellowship. Saturday morning will be a morning coffee talk with Kathy. Saturday afternoon we will focus on your physical alignment with massages, facials, and relaxing in the hot tub, walks, naps or whatever. The evening will conclude with fellowship. Sunday morning will consist of Bible study, worship, and a delicious brunch. See weekend options below.

Full Retreat—\$150.00

Price includes all meals, lodging, concert, coffee talk, 10 minute chair massage and more!



Concert and Coffee Talk A-\$85

Price includes dinner, concert and lodging on Friday, Breakfast and Coffee Talk on Saturday.



Concert and Coffee Talk B-\$50

Price includes concert on Friday, and Coffee Talk on Saturday. No meals or lodging.



Concert ONLY—\$25

Coffee Talk ONLY—\$30

LIVE LOVE(D)

WOMEN'S RETREAT Featuring Kathy Troccoli

October 11-13,
2013

Camp Okoboji
1531 Edgewood Dr
Milford, IA 51351
712-337-3325
www.campokoboji.org

October 11-13, 2013 Women's Retreat Registration Form

Name _____

Address _____

City _____ State _____ Zip Code _____

Birth date ____/____/____ (mm/dd/yyyy)

Home phone (____) ____-____ Cell phone (____) ____-____ Email _____@_____

Congregation / Denomination _____

Address _____

City _____ State _____ Zip Code _____

Emergency Contact Name/relationship/phone number _____

Roommate Preference (up to 3 only) _____

Mark which option you want below with an X

_____ Full Retreat—\$150

_____ Concert & Coffee Talk A—\$85

_____ Concert & Coffee Talk B—\$50

_____ Concert ONLY—\$25

_____ Coffee Talk ONLY \$30



Space for this retreat is limited. All registrations will be on a first come basis and full payment secures your spot. There will be a \$25 cancellation fee if cancellation is before October 1, 2013. There will be NO REFUNDS after October 1, 2013.

For those attending the Full Retreat please check if you will be wanting either of the following:

_____ 1/2 hour stone massage

_____ Facial

The cost for these are extra and will be paid directly to the massage therapist.

Credit/Debit Card Information

Name on Card _____

Card Number _____

Security Code _____ Expiration Date ____/____/____

Address _____

City/State/Zip _____

Phone Number (____) ____-____ Amount _____

Signature _____

Registration Payment

Please make checks payable to Camp Okoboji and send full payment with this form to:

Camp Okoboji
1531 Edgewood Drive
Milford, IA 51351

If using Credit/Debit Card please include the information in the box to the right.



!AMIGOS EN CRISTO!

News from IDW Hispanic Ministry in Denison, Storm Lake, & Des Moines: **Missionary/Pastor Daniel Vogel**

Iowa District
West, LCMS

Year 9 Issue 9
Sept. 2013



OUR 9TH ANNUAL HISPANIC FAMILY RETREAT

The weekend of August 9-11 our Hispanic mission churches from Denison, Storm Lake and Sioux City gathered for our annual family retreat. This is the 9th year our families have met at Camp Okoboji. Despite a nice rain that was needed in the area none of our activities were interrupted. We had over 80 folks in attendance; 49 from Denison, 17 from Storm Lake, 13 from Sioux City, and 2 from other communities. We thank our special staff that taught the sessions focusing on “God’s Glorious Creation in our Daily Lives.” Ruthie Witte taught the Preschool-Kindergarten class; Kayla Preto (from Omaha) taught the 1st-4th graders; Paula Vogel taught the 5th-8th graders and Henry Witte and I taught the high school class. Rev. Aurelio Margarino, pastor of Christ, Lord of Life Lutheran Church in Rockville, Maryland (near Washington D.C.) was our speaker. He taught the adults and was the preacher for our bilingual worship service on Sunday morning. As a refugee from Cuba he has a very special story of his own to tell. He has served as pastor in Maryland for 20 years and serves as a Synod leader in our Hispanic national ministry. I enjoyed visiting with him about our mutual friends in Miami. We were blessed to have him with us for this special weekend. +



Our Retreat staff included from left: Kayla Preto, Ruthie Witte, Paula Vogel, Rev. Dan Vogel, Rev. Aurelio Margarino, and Rev. Henry Witte.



Our families all showed up for meals. The Camp made special Hispanic meals for our group and were so helpful for all of the special needs of our group. We hope and pray we can continue this wonderful tradition of gathering our Spanish speaking members and friends together each year for this spiritual time of refreshment and fellowship. +



Pastor Aurelio Margarino teaching our adult sessions.



The Retreat is a time for families to be together, for kids to play together, and for new families to join us. Many of these families have become great friends. This weekend has become the highlight of our year together.

MY TYSON CHAPLAINCY AT THE BEEF PLANT IN DENISON: "Summer Work"

Working at the plant in the summer can be especially challenging. When it's hot outside the heat on the kill floor is just as hot. The plant always has to avoid condensation that causes contamination. It's a challenge for workers to keep hydrated and cool. The plant offers water and Gatorade breaks and the nurses monitor those who show signs of heat stress. Last month we had a special challenge as our Muslim workers fasted for their religious season of "Ramadan," a month without eating or drinking during daylight hours. Thankfully most did very well. I try to visit with all workers with health problems and especially those with special needs. It gives me an opportunity to get to know them better and offer any pastoral support that I can. +



TO CONTACT ME;

Rev. Daniel Vogel

32678 Aspen Ave.

Manning, IA 51455

712-653-2354 or

Cell: 712-309-1292

Email me at:

Dan.Vogel@idwlcms.org

*** Please forward this newsletter to a friend, from**

www.idwlcms.org

SCHOOL BEGINS: If you would like to support a Hispanic student attending Zion Lutheran school in Denison, please let me know. We are blessed to have great education in a religious setting that is changing lives and families.



PLEASE PRAY: + In thanksgiving for the success of our annual Family Retreat at Camp Okoboji. + Prayers for our Hispanic students as they begin a new school year at Zion, Denison. + For adult confirmation classes with Guadelupe, Francisco, Marcia and Ingrid, in all three of our congregations. + For our first English class beginning in August at Our Saviour, Des Moines and in thanksgiving for the many volunteers from this mission church. + For greater outreach in the Hispanic communities. + **In thanksgiving for the mission hearts of the many individuals and congregations of Iowa District West who monthly support the Lord's work among Hispanic immigrants.** +

IOWA EAST & WEST
LCEF



For more information on LCEF loans, investments, and services, please contact:

Carole L. White LCEF
V.P. Iowa East & West
409 Kenyon Rd, Suite B
Fort Dodge, IA 50501

Toll Free Phone:
1-877-439-5233
carole.white@lcef.org



Rev. Bob Riggert
Director of Customer
Services
bob.riggert@ialcef.org



Ruth Gerken
Promotions Director
Iowa East & West
ruth.gerken@ialcef.org



Lutheran Church Extension Fund

> where investments build ministry

SEPTEMBER 2013



Introducing LCEF's New Young Investors (Y.I.) Club

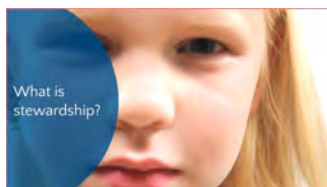
Lutheran Church Extension Fund (LCEF) is introducing the Young Investors (Y.I.) Club to help children and teens save for the future and learn about using money as a gift from God.

An investment in a Y.I. StewardAccount® can be started with just \$25. Y.I. Club benefits include:

- ◆ Premium interest rate on balances up to \$1,000
- ◆ Y.I. Club newsletters and web activities
- ◆ Report card extra credit
- ◆ Service hours extra credit
- ◆ College scholarship program for high school seniors
- ◆ Option for older teens to begin using a debit card
- ◆ Contests and fun!

Ready to learn more? Check out Y.I. Club at lcef.org or call 800-843-5233.

LCEF is a nonprofit religious organization; therefore, LCEF investments are not FDIC-insured bank deposit accounts. This is not an offer to sell investments, nor a solicitation to buy. LCEF will offer and sell its securities only in states where authorized. The offer is made solely by LCEF's Offering Circular. Investors should carefully read the Offering Circular, which more fully describes associated risks. LCEF StewardAccount access features provided through UMB Bank n.a. The StewardAccount is not available to investors living in South Carolina.



What do kids know about stewardship? This video clip, <http://vimeo.com/70554230>, could be a great discussion starter at your next board meeting.



Jesus
treasured
each of us
enough to
battle and
defeat Satan
for us.

Lutheran
Church
Extension
Fund



GOLDEN TREASURE TRUTHS

By Rev. Bob Riggert

“But he answered, ‘It is written . . .’ . . . Jesus said to him, ‘Again, it is written . . .’ . . . Then Jesus said to him, ‘Be gone, Satan! For it is written . . .’” (Matthew 4:4-10).

Satan offered Jesus earthly treasures of daily bread, amazing feats, and worldly kingdoms. Jesus responded to each of the temptations and rebuffed Satan with the truth of Scripture. Jesus’ response to Satan’s early distractions to His ministry made a statement as to His mission. Jesus’ journey to earth was not for His glory but for our salvation. Nothing would keep Jesus from going to the cross. Through His death and resurrection Satan’s head would be forever crushed, and we too would be victorious over the devil. Jesus treasured each of us enough to battle and defeat Satan for us.

The tempter still appears to offer daily bread over Living Bread and earthly glory and riches over eternal security. The weapon against the temptations of Satan remains the same, *“It is written . . .”* The Old Testament word that Jesus quoted is now the fulfilled Word. Martin Luther’s hymn of the Reformation reminds us, “The world’s prince may still scowl fierce as he will; He can harm us none. He’s judged; the deed is done; one little word can fell him.” (LSB #656, vs. 3)

Christian education programs receive new energy and focus as fall Sunday school, confirmation, and other programs bring the truths of Scripture to children. In the book [Already Gone](#) (Master Books, 2009), the research of authors Ken Ham and Britt Beemer reports that 60% of children active in the church become disengaged during their twenties. The authors propose that many children do not know the absolute truth of Scripture and do not have the tools to fight temptations. God’s Word is the inspired truth from Genesis 1:1 to Revelations 22:21. God has given us His truth to assure us of our salvation because of the sacrifice of Jesus. His truth guides our life. His truth is the sure weapon against the temptations of Satan.

Lutheran Church Extension Fund manages the investments of individuals, children, families, congregations, and organizations. The investments build church and schools and in other ways support ministers and ministries so that the Truth of God’s Word can be shared with every generation. Truth drives away Satan.

Reflection: In what ways does Satan tempt you? What scriptural truths are most helpful to you in times of temptation?

Prayer: “May glorious truths that we have heard, the bright sword of Your mighty Word, Spurn Satan that Your Church be strong, bold, unified in act and song.” LSB #585, vs. 4

Note: Lutheran Church Extension Fund offers a “Treasure Chest” of financial support for congregations, church workers, and members of all ages. For additional information contact:

Carole White, District Vice-President (carole.white@lcef.org)
Rev. Bob Riggert, Director of Customer Services (bob.riggert@lcef.org)
Ruth Gerken, Promotions Director (ruth.gerken@lcef.org)

LCEF is a nonprofit religious organization; therefore, LCEF investments are not FDIC-insured bank deposit accounts. This is not an offer to sell investments, nor a solicitation to buy. The offer is made solely by LCEF’s Offering Circular. Investors should carefully read the Offering Circular, which more fully describes associated risks.

Mission Opportunities

A newsletter of resources, events, and ideas to help God's people passionately, intentionally, and faithfully extend the Gospel within our communities, throughout the District, and into all the world!

September 2013

Loving your community – Last month while worshiping with our son, the bulletin contained a notice about their congregation honoring the local fire and police workers.



Members were going to be dropping off boxed lunches, writing thank-you notes, and also inviting the public servants to be present in worship where they would be recognized and prayed for. Another congregation had a fundraiser to help purchase a defibrillator. What are some simple and practical ways your congregation and you can love your community? Please share your ideas and efforts with me!

Need funds? Iowa District West is ready to partner with you in your outreach efforts. As you develop a plan for reaching out into your local community, go to www.idwlcms.org/missiongrants.php to download a mission grant application as well as to see efforts that other congregations have attempted. Deadline for application submission is March 1, 2014.



Desiring to reach millenials? (those born between 1980-2000) Read or download the latest issue of the Journal of the Lutheran Society for Missiology that focuses on the topic. Go to www.lsfmissiology.org (click on Missio Apostolica Issues – May 2013). I'd welcome your response at mark.gerken@idwlcms.org.

Pastor and People, a beautiful partnership when working together to carry out the mission of God's Church! The Pastor-People Project (see accompanying poster) consists of three 30-minute videos meant to prompt great discussion about the role of lay leadership in Lutheran congregations. Produced by Shepherd's Canyon Retreat, an RSO of the LCMS.



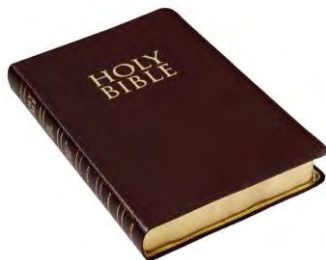
A number of upcoming events are designed to help equip you and your congregation for passionately, intentionally and faithfully reaching out into the mission field of your local community. Mission grants or scholarships are available from IDW for many of them to assist with your participation or implementation of the plans that develop from your attendance. Contact me for more information!

- **Wikiconference**, Katy, TX, September 24-26, designed to help sacramental church leaders reach the lost in their community. Go to www.wiki52.com.
- **Hinge Events**, see accompanying poster for dates and locations in IDW, held in partnership with Transforming Churches Network and designed to assist congregations and individuals build bridges and relationships with those in their community. Go to www.iowamissions.org to register.
- **Regional Outreach Conference**, Omaha, NE, October 18-19. Led by Lutheran Hour Ministries and designed to provide plentiful resources and inspiring motivation for Christians who live in the freedom of the Gospel to share it with others. Go to www.lhm.org/roc.
- **National Rural and Small Town Mission Conference**, Kansas City, MO, Oct. 31-Nov. 2, network with others, be encouraged, and hear about resources designed to assist your congregation in sharing Christ. Go to www.lcms.org/rstm/conference.
- **Best Practices for Ministry Conference**, February 20-22, 2014, Phoenix, AZ, a free conference for those who love the local church, the unchurched and the LCMS. It's a compendium of just what the title says. Go to www.bestpracticesforministry.net.

Check out this resource from one of our partners! The LWML has produced a resource known as the “Hot Seat” which you can bring to your congregation! Ever at a loss for words when witnessing about your faith? Looking for practical how-tos on sharing Christ’s love in everyday situations? Hot Seat materials are available at www.lwml.org/missions/gospel-outreach_hot-seat.php. Facilitator guidelines, a poster, stickers, Bible verses, and scenarios are available in PDF format to print and use.



Implication for your outreach? Despite the perception that Scripture hasn’t impacted the nation’s young people, Mosaics (ages 18-28) actually tend to show more interest in what the Bible has to say on certain issues than do older adults. Four out of ten Mosaics (40%) say they are interested in the Bible’s wisdom on dealing with illness and death, compared with about one-quarter of all adults (28%) who say the same. More than one-third of Mosaics (35%) are interested in the Bible’s perspective on dating and relationships, and four out of ten (42%) want to know what Scripture says about parenting—both of those percentages are much higher than the norms.





BUILDING BRIDGES TO YOUR COMMUNITY?

How can we connect with our community? A great place to start to be equipped is by attending a “Hinge Event.”

What is a “Hinge Event”? Hinge Events are gatherings of passionate people who are looking to become deliberate in their actions for reaching people with the love of Jesus Christ. Participants will learn how to:

- Open new doors to their community
- Discover practical ways to strengthen outreach to the local mission field of their community
- Connect with others on the same journey

Cost is \$20 per person or \$100 for five or more from the same congregation. Gather your team and prepare to begin the transformation journey at these upcoming Hinge Events:

Saturday, Oct. 12—St. John Lutheran Church, Honey Creek 9am-3pm

Sunday, Oct. 13—Emmanuel Lutheran Church, Lake View 1-5pm

Saturday, Nov. 16—St. Paul Lutheran Church, Emmetsburg 9am-3pm

Sunday, Nov. 17—St. Paul Lutheran Church, Fort Dodge 1-5pm

To register go to www.idwlcms.org or contact Jill Davis at the District office (515-576-7666/jill.davis@idwlcms.org).

Let's talk about the world's oldest profession...

The P P P Pastor People Project

How can lay leaders be better lay leaders?

Three thirty-minute videos meant to prompt great discussion about the role of lay leadership in Lutheran congregations

“Pastors are people too. They bleed when you cut them and they say ‘ouch’ when you pinch them.”

”Being a pastor is one of the 4 hardest jobs in America.”

“Issues pastors face include: criticism, rejection, betrayal, loneliness, weariness, frustrations, and disappointments. Other than that, it’s an easy job.”

“Conflict: a difference of opinion charged with emotion.”

“Three kinds of people: conflict avoiders, conflict producers, peacemakers.”

“The four ‘Gs’ of peacemaking”

“What does it mean to be a shepherd?”

“The Seven ‘As’ of Confession”

“Responses to conflict ... The Slippery Slope”

Pre-release price - \$69; after September 1 - \$89.

Shepherd's Canyon Retreat, Inc.

PO Box 51510, Phoenix, AZ 85076

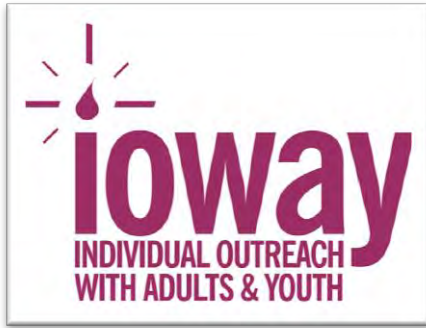
Moderator: Rev. Mark Hannemann, Omaha, Nebraska

Participants: Rev. Mark Rockenbach, Seward, Nebraska
Rev. Mark Lundgren, Auburndale, Wisconsin
Dave Anderson, Phoenix, Arizona

Video taped at Inspirmedia Productions, Lincoln, Nebraska.

Shepherd's Canyon Retreat provides week-long counseling retreats for men and women in ministry.





God's Hands and Feet

Haiti June Trip

In June, an IOWAY team of six, served God's people for a week in Jacmel, Haiti. They worked with Pastor Marky Kessa, the President of the Lutheran Church in Haiti. They distributed many items, fed children and taught VBS. Prayerfully consider sponsoring a child in Haiti: <http://www.idwlcms.org/news.php>. Sixty-seven (67) children are now sponsored by Iowa District West churches and/or individuals!



Haiti July Trip

Patti Andersen led a team of nine in July for a week to serve in Jacmel, Haiti. The team worked in an orphanage and taught VBS. They worked hard in very hot weather distributing food, shoes and hugs. Please pray for the children in the orphanage who live in horrible conditions.

Lewisburg, WV

Pastor Mark and Ruth Gerken led a team of Iowans to Lewisburg in the Appalachian area of WV. They took a long road trip with many supplies to distribute and to help with a Day Camp/VBS at a new church plant. It is only the fourth LCMS church in the state of WV.



Los Angeles CA

I led a team to work with four Lutheran churches canvassing and teaching VBS in the inner city of Los Angeles. Our team also assembled 312 health kits and we distributed the kits along with Bibles, food and clothes to the homeless who live on Skid Row. Skid Row is an area where 7,000–8,000 homeless people live.



Breckenridge and Leadville, CO

Bonnie Kabrick led this team. They had a great time teaching VBS to Hispanic children at a trailer park. They were joined by five people from Texas to teach VBS at the Lutheran Church in Breckenridge.

Upcoming Mission Opportunities

Jacmel, Haiti

You are invited to serve in Jacmel, Haiti with fellow Iowans, December 6-14, 2013. Register soon. Limited to twelve. Currently have five openings.

Pasadena, CA

You are invited to be a Petal Pusher, December 28-January 4, and decorate the Lutheran Hour and other floats for the famous Rose Parade. Experience what is "behind the scene" and what is involved in decorating the beautiful floats. This trip also includes an outreach in Skid Row to help the homeless.

Print the registration form and register today:

www.idwlcms.org/ministry_areas/ioway/information/pasadena_registration.pdf. If you are an LWML member and have not previously received a WISHES grant, you can receive \$500. If you are rostered with LCMS, you are eligible for a \$450 sponsorship. Contact Ellie Menz for sponsorship forms.

Check out the IOWAY blog for updates and photos of the LA, WV and Haiti trips at

www.servinggodbyservingothers.blogspot.com

God bless you as you serve Him,

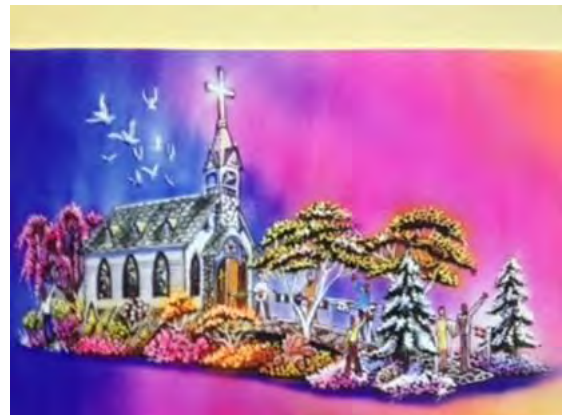
Ellie Menz

807 W. South

Jefferson, IA 50129

ellie.menz@idwlcms.org

515-370-1159





**AMAZING CROWD OF PEOPLE SEND OFF
FOUR MISSIONARIES AT ONE TIME!**

There are a bunch of "firsts" happening at Mission Central. We've never had four (4) missionaries sent off at the same time, but that's just what happened on August 3, 2013 at this MIRACLE PLACE!

Anthony and Jamie Diliberto from Lima, Peru; Alissa Amus from Macau; John Hinkle from Southern China; and Caitlin Worden who is going to Peru, were all present for this special event. The Ministry Center was filled, and people enjoyed the reports of these missionaries. People came from all over the Midwest and what a JOY to have two full bus loads come and spend the day.

The buses and cars filled the parking area at Mission Central. It was a JOY to welcome Pastor Mark Halverson from King of Kings in Cedar Rapids, Iowa and his congregation as they made their third trip to visit Mission Central.



Pictured below is the group called to pray for and send off all four missionaries.



LARGEST GROUP EVER TO ATTEND EVENT AT MISSION CENTRAL

On July 27, 2013 we had nearly 250 people present for the presentations of the Rev. J. P. Cima and teacher Sarah Schaff. Four (4) bus loads came from Pleasanton, Lincoln, and Davenport, Nebraska and one bus came from Wahpeton, North Dakota! It was a day filled with great visits, miracles and so many friends that came for the very first time.



The group toured the Mission Museum and the new Ministry Center (including the Mission Action Art Gallery). The entire group enjoyed a meal prepared by the volunteer cook staff at Mission Central.

After the meal, the group was introduced to the Cima Family and Sarah Schaff. It was a great blessing to see the pictures and hear the reports of these special people. Due to the large number of people present, additional chairs were moved in so all could be seated.



Mission Central – LCMS World Mission

40718 Highway E16
Mapleton, IA 51034
712-882-1029

Gary Thies
gary.thies@lcms.org
www.missioncentral.us

MISSIONARIES COMING TO MISSION CENTRAL PLEASE MARK YOUR CALENDARS!



Anthony & Jamie Dilbarito

Peru

Saturday, August 3, 2013

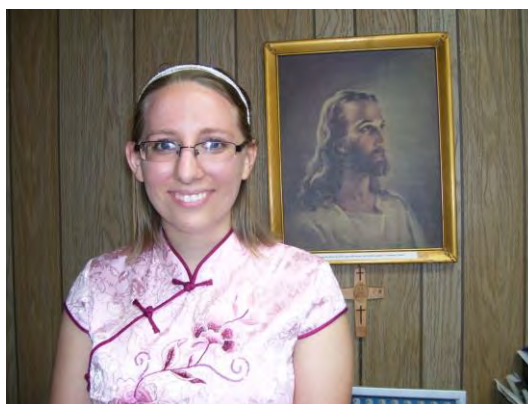
1:30 PM

Alissa Asmus

Macau

Saturday, August 3, 2013

1:30 PM

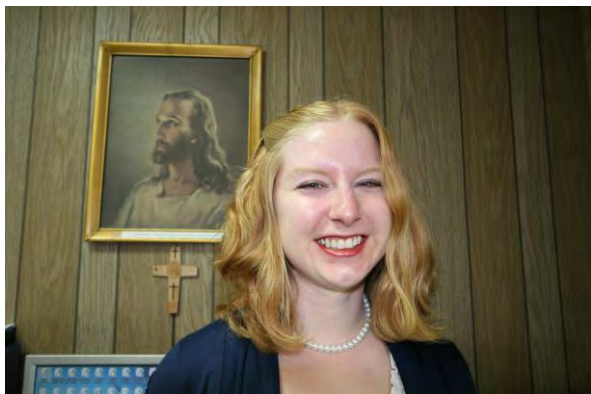


Caitlin Worden

Lima, Peru

Saturday, August 3, 2013

1:30 PM

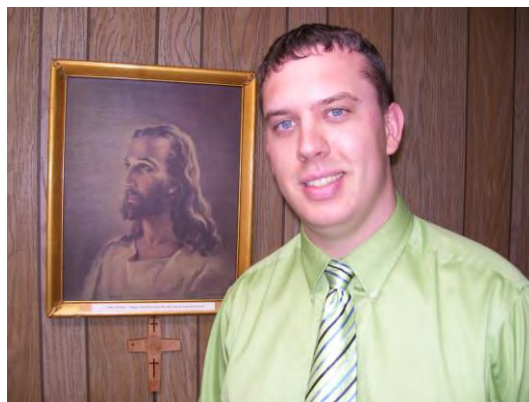


Eric Kunkel

Macau

Saturday, August 10, 2013

1:30 PM



Saturday, August 24, 2013

1:30 PM Presentation - DAY LONG EVENT

Josh Lange



&

Rev. Schaun Daugherty
(Beth, Jonas and Silas)



Rev. Jon & Julie Muhly

Warsaw, Poland

Saturday, August 31, 2013

1:30 PM



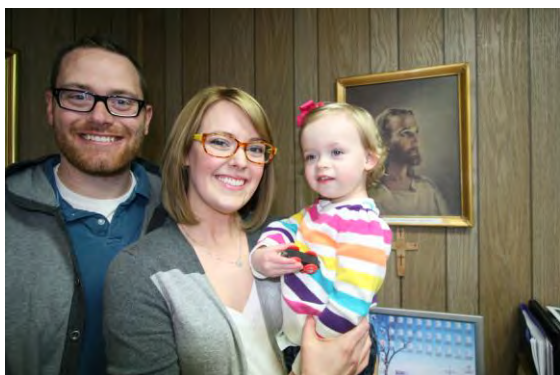
Ivan Rasch & Family

Ghana, West Africa

Saturday, August 31, 2013

1:30 PM

Matt Myers
Macau
Saturday, September 21, 2013
DAY LONG EVENT



Rev. James Baumgartner & Family
Shanghai, China
Saturday, September 21, 2013
DAY LONG EVENT

Teacher Robin McCoy
Bangkok, Thailand
Saturday, December 7, 2013
1:30 PM



Mission Central-LCMS World Mission

40718 Highway E 16
Mapleton, Iowa 51034
Phone: 712-882-1029

gary.thies@lcms.org
www.missioncentral.us

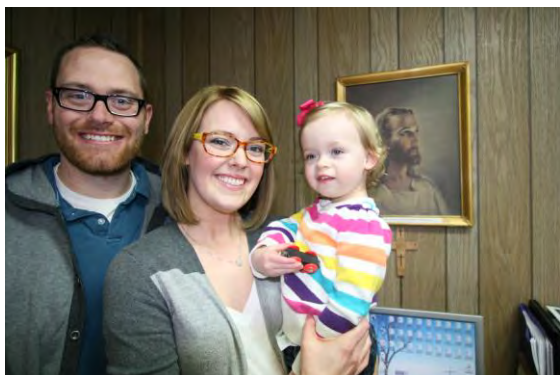
MISSIONARIES COMING TO MISSION CENTRAL PLEASE MARK YOUR CALENDARS!

Matt Myers

Macau

Saturday, September 21, 2013

DAY LONG EVENT



Rev. James Baumgartner & Family

Shanghai, China

Saturday, September 21, 2013

DAY LONG EVENT

Teacher Robin McCoy

Bangkok, Thailand

Saturday, December 7, 2013

1:30 PM



Mission Central-LCMS World Mission

40718 Highway E 16
Mapleton, Iowa 51034
Phone: 712-882-1029

gary.thies@lcms.org
www.missioncentral.us

HISPANIC OUTREACH IN SIOUXLAND

Rev. Henry and Ruthie Witte
 1013 South Newton Street
 Sioux City, IA 51106
 712-202-4751
Henry.Witte@idwlcms.org



September 2013

“Life, liberty and the pursuit of happiness....”

In our country we consider these to be basic rights that all men should have and enjoy. Many immigrants come to this country seeking to live under these same principles and to enjoy a better life. However, to have true life, liberty and happiness we need more than a certain style of government and laws. We truly need God’s help.

Because of sin we live without true life, without true liberty, and without true happiness. Likewise people throughout the world are in the same condition. In our human search for these goals we fall short and find ourselves hindering our lives (spiritually and physically), enslaving ourselves to evil habits, and falling into depression and frustration. Our sinful nature leads us away from that which we seek.

In order for us to have true life, liberty, and happiness, God sent His Son Jesus Christ. He died and rose again to free us from sin and its power. In Him we receive true life, liberty, and happiness.

In him was life, and the life was the light of men. John 1:4
So if the Son sets you free, you will be free indeed. John 8:36

These things I have spoken to you, that my joy may be in you, and that your joy may be full. John 15:11¹

September 15 through October 15 is Hispanic Heritage month. Several Latin American countries celebrate their independence during this time: Costa Rica, El Salvador, Guatemala, Honduras, Nicaragua, Mexico, Chile, and Belize. We hope to reach out to our Spanish-speaking neighbors to share with them a true independence in Christ Jesus. We pray that God continue to open doors for us to proclaim and teach His Word.

We have enjoyed the help of our summer intern, Hannah Miesner, during these past weeks. She was able to help with the VBS programs at St. Paul, Hope, Calvary, and Bethany. She also helped with our week-long follow up programs at St. Paul and Hope. She and the intern at

¹ *The Holy Bible: English Standard Version*. 2001. Wheaton: Standard Bible Society.

Calvary were able to prepare a children's event at a local trailer court. We handed out fliers several days before the event and were able to use the party room of the administration area to teach the children about Noah, the flood, and God's salvation in Christ Jesus. Along with crafts, snacks, and games outside the children enjoyed a full afternoon and continue to ask the manager when we will have another activity for them. Around 30 children came and several mothers also. Members from several Lutheran churches helped us in different ways with one presenting a puppet show. We are thankful for this opportunity and hope to continue our connection with these families. Hannah has also helped with visits on families and with the canvasses in the neighborhoods around Hope, Calvary, and Concordia. She helped with the children at our Hispanic Retreat and the publicity for our English classes. We pray God's blessings on her return to the university and her studies this coming school year.

During the second weekend of August we were able to attend our Hispanic Retreat at Camp Okoboji where members and friends from our Lutheran ministries in Storm Lake, Denison, and Sioux City came together for Bible study, worship, and fellowship. We had Bible classes for children, youth, and adults. Over 80 people attended the event and most were able to stay the entire weekend. Pastor Aurelio Magareno, who serves in the Washington DC area, was our presenter for the adult Bible studies. The theme for all the studies centered around creation and its meaning for our lives. We thank God for this special time and pray His blessings on the Word that was heard.

We plan to begin our English classes and citizenship classes the last week of August. We will offer classes two nights a week at St. Paul in Sioux City and two nights a week at Hope, in South Sioux City. Please continue to pray that we may be able to help our students with their English abilities and also their communication with God.



Hannah (pink shirt) helping at Bethany's VBS
The lady standing in blue is Deaconess Cherryll Hoffman who later that evening broke her leg. Please pray for her recovery.



Hannah with some of the children at the Hispanic retreat



Sioux City participants at the Hispanic retreat with Pastor Aurelio



CELEBRATING GOD'S GIFT OF AGING



EncourAGEnet, the LEA network that links, equips, encourages, and celebrates post-retirement service, invites you to **CELEBRATING GOD'S GIFT OF AGING** at the Hilton Milwaukee City Center Hotel in downtown Milwaukee, WI on Thursday, October 24, 2013 from 8:30-1:00.

This pre-Convocation event will be a refreshing opportunity to energize, uplift, encourage and resource with one another. It is open to anyone who is aging and cares about the challenges and opportunities of the aging process.

The host for the day will be **Rich Bimler**. Event speakers include **Carol and Dave Ebeling** and **Chuck Dull**. **Charlie Mueller, Sr.** will lead devotions.

The cost is \$40 which includes sessions, continental breakfast and a buffet lunch.



Chuck Dull will provide the landscape and a glimpse of aging in the U.S. as 10,000 people reach the age of 65 each day.

He served as a director of education in two parishes, an associate professor and dean at Concordia University--Nebraska, an executive at AAL, now Thrivent Financial for Lutherans, and the chief executive at Hong Kong International School before beginning his current professional practice as an organizational and executive development consultant to businesses and non-profit organizations in the USA, Europe and Asia. His passions continue to be the science and practice of personal, familial and organizational development.

Dave and Carol Ebeling will share models of methods and ministries in families, homes, individuals, and churches in which older adults are involved.

Both Dave and Carol are graduates of CUC, ('63); each has two graduate degrees from Indiana University. Both taught in Lutheran schools early in their careers. Dave served as Asst. Supt of the Bloomington (IN) public schools, on staff with CPH, and education executive with Indiana District. Carol supervised Indiana University student teachers, pursued counseling and became executive director of Hospice of Bloomington. Both have served on numerous synodical and district boards, both have written books for CPH and Wheat Ridge; both still consult with congregations and districts regarding children, family and aging and grief issues.



EncourAGEnet serves Lutheran educators and also reaches out to all who wish to age well, regardless of their professional background. Therefore this event is open to both professional church workers and lay people.

Conference Schedule:

7:30-8:30 AM – Registration – Fourth Floor – Hilton Milwaukee City Center Hotel

{NOTE for Convocation participants: One-stop registration for both the EncourAGEnet event and the Convocation. No need to make an extra trip to the Convention Center to pick up your Convocation ID badge and materials. Bring your registration confirmation with you to the hotel.}

Coffee, continental breakfast and conversation; exhibits – Crystal Ballroom

8:30 AM – Welcome, Introductions, and Devotions – Rich Bimler and Charlie Mueller, Sr.

9:00-9:50 AM – EncourAGEment 1 – Chuck Dull

9:50-10:10 AM – Break

10:10-11:00 AM – EncourAGEment 2 – Dave and Carol Ebeling

11:00-11:45 AM – Resources, Review, and Reflections – Rich Bimler

11:45 AM – Closing Devotion – Charlie Mueller, Sr.

12:00 Noon – 1:00 PM – Buffet lunch

Time to socialize and interact with exhibitors and sponsors

Participants can either register for the whole Convocation or just register for the EncourAGEnet conference at the [online registration site](#). More information about the LEA Convocation can be found at the official Convocation web site: www.leaconvocation.org.

**67th Annual Banquet
of
The Lutheran Service Society and Auxiliary**

Theme: Faith Unseen

*"Now faith is being sure of what we hope for and certain
of what we do not see." Hebrews 11:1*

Guest Speaker: Peter von Qualen



Peter is President of the Beta Sigma Psi fraternity at Iowa State University.

Beta Sigma Psi, the National Lutheran College Fraternity, was founded in 1925 with the purpose of providing an environment in which the Lutheran college man can grow spiritually, scholastically and socially.

Peter will share stories of how God has used him and his fellow alumni to encourage the Lutheran man to experience a brotherhood driven to succeed and firmly rooted in the bedrock of Christian faith.

Location: Redeemer Lutheran Church

3204 S. Lakeport Road

Sioux City, Iowa

Date: September 29, 2013

Time: 12:30 pm

Catered by:

The Southern Hills Hy-Vee

Podcasts of the Good Shepherd Hour can be found at www.GoodShepherdHour.org.

For more information or to register, contact Erik Larsen (712-203-0042 or takeanothergander@gmail.com). Cost: \$8 for adults; \$4 for children nine and under.



Living in Faith Everyday • National Lutherans For Life Conference

November 8-9, 2013 • Gloria Dei Lutheran Church, Urbandale, Iowa

“And his mercy is for those who fear him from generation to generation” (Luke 1:50).

Greetings,

I'm the president of Lutherans For Life of Iowa and I want to speak to you very briefly about LIFE! That can be an acronym you know. L.I.F.E.—Living in Faith Everyday. That is the theme of this year's Lutherans For Life Conference to be held November 8-9 in Des Moines, IA.

Conference speakers like LCMS president Rev. Matthew Harrison, radio personality **Steve Deace**, and LFL's executive director, **Dr. James Lamb**, will focus on "Living in Faith Everyday in the Church" and "Living in Faith Everyday in the World." There will be many other presenters giving practical ways to be strengthened in our faith and in living our faith.

We live in a time when the Church is losing its influence on the world and the world is increasing its influence on the Church. Living in Faith Everyday is needed now more than ever.

So I invite you to come and be equipped for L.I.F.E.—Living in Faith Everyday. Learn ways you can help reverse the flow of influence and make a difference in the Church and in the world through the life-giving and life-changing message of the Gospel of Jesus Christ.

I also invite you to support this important conference! That's why I have included a sponsorship form as well as our conference poster. Your support allows us to keep conference registration fees low and bring in quality speakers. Please consider a gift today.

For more information please contact Karen Frohwein, **or to register go to LFL's website, www.lutheransforlife.org/conference**.

May God bless you as you live in faith everyday to His glory,

Karen Frohwein, LFL of IA President
709 Second St SW, State Center, IA 50247
kfrohwe@hotmail.com 641-691-1884



Mark your calendar! Register Now!
2013 National Lutherans For Life Conference
November 8-9

Gloria Dei Lutheran Church
Urbandale, Iowa (Des Moines)



Our theme is L.I.F.E. • Living in Faith Everyday.

REGISTER ONLINE: www.lutheransforlife.org/conference

“And his mercy is for those who fear him from generation to generation.”
(Luke 1:50)

How do we live out our biblically-based, For Life convictions in this culture? Our 2013 National Lutherans For Life Conference will help you do that as we focus on L.I.F.E.—Living in Faith Everyday.

Scheduled speakers:

- Steve Deace - Nationally syndicated radio talk show host
- Rev. Matt Harrison - President, Lutheran Church-Missouri Synod
- Linda Bartlett - Titus 2 for Life
- Jenny Farrell on post-abortion healing
- Rev. Peter Preus on dealing with suicide
- John Talley on religious freedom
- Chris Lamb on protecting you and your family when dealing with the online world
- Laura Davis on L.I.F.E. with youth
- Rev. Dr. James I. Lamb on end-of-life and L.I.F.E. around the world



**Lutherans
For Life**

Equipping Lutherans to be
Gospel-motivated voices For Life



Living in Faith Everyday • National Lutherans For Life Conference

November 8-9, 2013 • Gloria Dei Lutheran Church, Urbandale, Iowa

“And his mercy is for those who fear him from generation to generation” (Luke 1:50).

Sponsorship Donation Form

In lieu of Witness Messages in a conference book, and to curb printing costs, we are offering sponsorship opportunities to chapters, federations, Life Teams, LMCs, churches, families, and individuals. Sponsorship gifts will be listed in the conference folder.

Sponsorship levels:

- Bronze \$50
- Silver \$100
- Gold \$250
- Platinum \$500

If you wish to make this sponsorship in honor or memory of a person or event, please indicate this information below.

___ in honor of ___ in memory of Name: _____

Earn **one complimentary conference registration** with every \$750 of sponsorships and/or donations turned in by an individual, LFL Life Team, chapter, or congregation; **\$1000** for a state affiliate.

Name _____

Address _____

City, State, Zip _____

Telephone _____

E-mail _____

Payment information/total amount enclosed: \$ _____

Check (made payable to Lutherans For Life) or Credit Card

Please return this form with your check or credit card information in the enclosed envelope to: Lutherans For Life, 1120 South G Avenue, Nevada, IA 50201-2774.



Amount \$ _____

Credit Card # _____

Exp. Date _____ Phone: _____
Month / Year

Signature _____



Operation Barnabas

A Network of Care

Atlantic Chapter

Armed Forces Day, Memorial Day and the Fourth of July have all come and gone this year. The Atlantic Chapter once again attended the Memorial Day Celebrations in Adair, Anita, Atlantic and Casey and recognized those who have served and those who are serving our great nation. This was our second year of passing out carnations on Memorial Day; and the response was great! We had veterans looking for our members so they could get their carnation and thank us for remembering them. In June we lost one of our founding members who was instrumental in the formation of our chapter. SMP Vicar Michael Johnson was called home suddenly. Vicar Mike was instrumental in coordinating with two local day care center directors to create a two-page information sheet to be used by Reservists, National Guard members and recently discharged active duty military when registering for daycare scholarships from our Warrior Care Program. The Warrior Care Program was established to provide Day Care Scholarships to our warriors who are conducting an employment search owing to a deployment (Reservists and National Guard) or a separation from the military under honorable circumstances. Our local Veteran Service Officer or County Veteran Affairs Officer has agreed to serve as our "Intake" worker. Currently we have two licensed Day Care Centers in Atlantic that will honor our Day Care Vouchers and we are looking to add more licensed Day Care Centers in the surrounding area as well as contacting the County Veteran Service Officers in the adjoining counties.

We are looking forward with great anticipation to the Iowa District West Operation Barnabas Conference. The conference is Saturday, September 28, 2013 at the Carroll County Conservation Center, Swan Lake State Park, Carroll, Iowa. Everyone in the District is invited. Anyone interested in attending can register at www.idwlcms.org (under "Calendar") or check with your congregation's Operation Barnabas contact person for a printed registration form. An information packet was sent to all Iowa District West congregations in mid-August.

Our chapter is currently making plans to assist our local Hy-Vee with their Veteran's Day Breakfast, which Hy-Vee provides for free to our veterans. Last year chapter members helped register the veterans as they came in, carried trays for those who weren't able, served juice, and bussed tables. We are happy that we have been blessed with this partnership with our local Hy-Vee and are looking forward to seeing the smiles on our veterans' faces again this year.

Serving those who serve,

Rich Kanning
Operation Barnabas Atlantic Chapter

**Rev. Brian C. Licht
Host Pastor**

Pastor Licht was ordained into the Office of the Holy Ministry in July of 2006 following a 15 year career as an Occupational Therapist. He has served as the Associate Pastor at St. Paul Lutheran Church in Carroll, IA from 2006 through 2011. In January of 2012 he was called to serve the same congregation as the sole pastor. He has served as the Carroll Circuit Counselor since July of 2009. Pastor Licht holds a Master's Degree in Occupational Therapy from Western Michigan University and a Master's of Divinity Degree from Concordia Theological Seminary.

**Dr. J. Gordon Christensen
Clinician**

Dr. J. Gordon Christensen is the Director of Music at St. Paul's Evangelical Lutheran Church in Council Bluffs. Dr. Christensen has presented workshops in Mid-Western states, the Republic of Slovakia, and Russia. He has collaborated with Dr. Steven Hoffman, Kantor of the Wyoming District of the LC-MS in Bach seminars for pastors and musicians. Dr. Christensen is currently authoring a history of pipe organs in Nebraska, and serves as the Education Director for the Lincoln chapter of the American Guild of Organists. He holds a Bachelor of Music degree from Hastings (Nebraska) College, and Master of Music and Doctor of Philosophy degrees from the University of Nebraska-Lincoln.



A display of organ music for sale will be available during the workshop, offered by Dietze Music House and clerk, Ric Rickert of Lincoln, NE.

Supporting funds have been provided by Thrivent Financial for Lutherans, Pottawattamie Chapter.

**St. Paul Evangelical Lutheran Church
1844 Highland Drive
Carroll, Iowa 51401**

**St. Paul Evangelical Lutheran Church
1844 Highland Drive
Carroll, Iowa 51401**

**Rev. Brian Licht, Host Pastor
Dr. J. Gordon Christensen, Clinician**

Organist Workshop

*Saturday, October 12, 2013
8:30 a.m. - 3:15 p.m.*



Organist Workshop Schedule

Saturday, October 12, 2013
St. Paul Lutheran Church
Carroll, Iowa

8:30 - 9:00 a.m.

Registration/Coffee, juice and rolls

9:00-9:15 a.m.

Opening Devotion ~ Sanctuary

9:15 - 10:30 a.m.

Review of Selected Repertoire

10:30 - 10:50 a.m.

Break

10:50 a.m. - 12:00 p.m.

Skills at the Console

12:00 - 12:45 p.m.

Luncheon and browsing

12:45 - 1:45 p.m.

Communications/Professional Growth

1:45 - 2:00 p.m.

Break

2:00 - 3:00 p.m.

Panel Discussion:

“What do you expect from your organist?”

Panel Members:

Pastor: Rev. William Weiss

Immanuel Lutheran, Lidderdale

Secretary: Donna Spaen

St. Paul Lutheran, Carroll

Choir Member/Kantor: Bambi Heckerman

St. Paul's Lutheran, Council Bluffs

Congregation Member:

Organ Builder/Technician:

3:00 - 3:15 p.m.

Closing Prayers

Description of Sessions:

Repertoire: This session will discuss the importance of appropriate music for prelude, offering, and postlude music. Thirty-six currently published resources will be reviewed, including a “grade level” (very easy, medium), a small portion performed, and a copy passed around through the registration. Copies of these resources will be for sale at the workshop.

Skills at the Console: This session will include discussion and demonstration of the organist's leadership role in hymn playing and accompanying the liturgy; organ registration; tips regarding introductions, “lead-ins,” and transpositions; tips on introducing new-to-congregation hymnody; and tips for efficient practice.

Communications: This session will discuss avenues of communications within the church staff and congregation that involve the musicians, including long-range planning, newsletter articles, bulletin information, and promotion of special events in the community and area.

Panel Discussion: A panel, comprised of a pastor, church secretary, choir member/Kantor, congregation member, and organ maintenance technician will speak to the question: “What do you expect from the organist?”



Follow-up Lessons:

Registration includes one follow-up organ lesson within six weeks at one of the listed sites under the instruction of a professional organ teacher.

Date and time of lesson will be by mutual agreement of the teacher and the registrant at site of choice.

Please check which site is most convenient for you.

Sioux City

Carroll

Algona

Council Bluffs

Storm Lake

Registration:

Name: _____

Address: _____

Telephone: () _____ - _____

Email: _____

Church: _____

Church Address: _____

Registration includes: packet of organ music, copy of the monthly music publication, hand-outs from the “Skills at the Console” and “Communications” sessions; extensive bibliography of organ repertoire; one follow-up lesson; lunch and refreshments.

- Single registration.....\$40.00
- Two or more from the same church..... \$30.00 each

Checks should be made payable to:
 St. Paul Evangelical Lutheran Church

Registration Fee Enclosed: \$ _____

Questions:

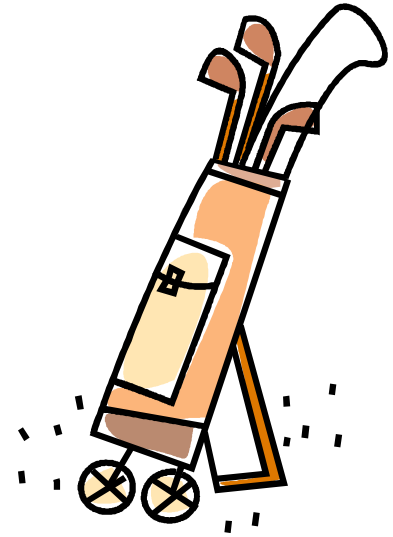
Rev. Licht - 712-792-4354

Dr. Christensen - 712-322-4729

Mail registration form and enclosed check or money order to:

Organist Workshop
St. Paul Evangelical Lutheran Church
1844 Highland Drive
Carroll, Iowa 51401

Pastors Golf Day



WHEN: Monday, September 9, 2013

WHERE: Ida Grove Country Club

TIME: 9:00 a.m.

FEE: \$20 (two rounds of golf with cart and lunch)

PLAY: First round, scramble/best ball

CONTACT: Rev. Don Winterrowd

(stpaulig@netllc.net or 712-364-2918)

Deadline to register is September 7.

